



#MoodDionPattern



Print only this page first to check accuracy.
The Mood square above should measure 2 inches. Print "actual size" in "portrait" mode (not auto center). Formatted for both US Letter & A4 paper sizes.

Formatted for both US Letter & A4 Paper

Trimless Option: This is the fastest! No trimming needed! Place left-side margins over right-side margins, overlapping dashed lines and dots. In the same fashion, top margins will overlap bottom margins. Slight unprinted gaps are normal for this method.

Trimmed Option: This removes any unprinted gaps. Trim along the top and right margins at the dashed lines. Overlap the trimmed margins to the untrimmed margins, matching dashed lines and dots.

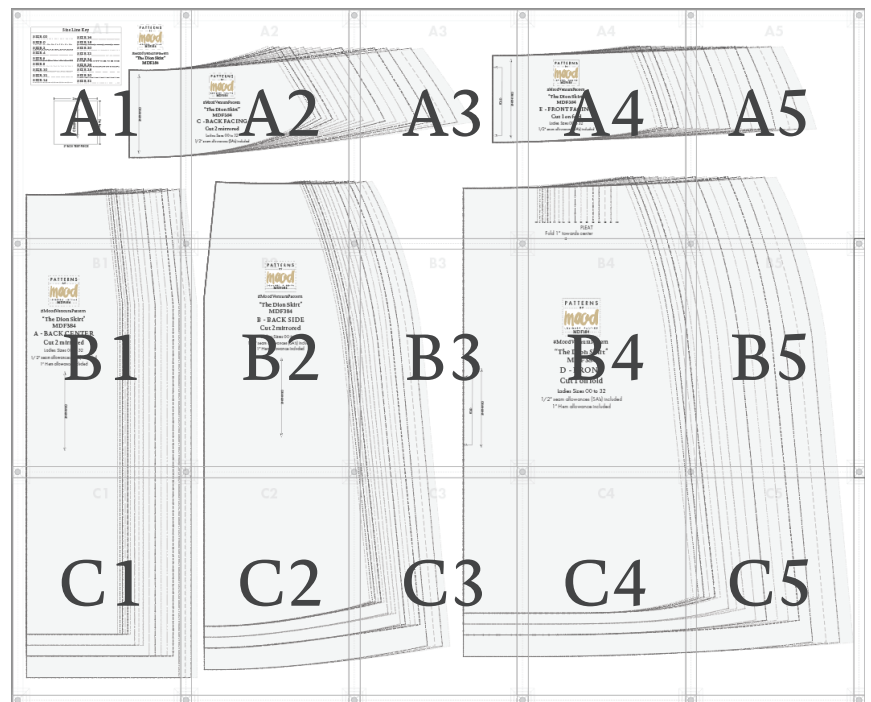
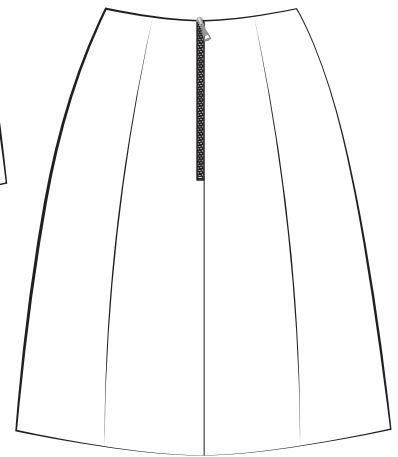
Tip! Build rows first, then join the rows together as you go.

"The Dion Skirt"

Front



Back





#MoodDionPattern

“The Dion Skirt”

Ladies Sizes 00 to 32

BODY MEASUREMENTS IN INCHES (Chart 1)

SINGLE SIZES	00	0	2	4	6	8	10	12	14	16	18	20	22	24	26	28	30	32
WAIST	23	24	25	26	27	28	29.5	31	32.5	34.5	36.5	38.5	40.5	42.5	44.75	47	49.25	51.5
HIPS	34	35	36	37	38	39	40.5	42	43.5	45.5	47.5	49.5	51.5	53.5	56	58.5	61	63.5

APPROXIMATE FINISHED GARMENT MEASUREMENTS - IN INCHES (Chart 2)

SINGLE SIZES	00	0	2	4	6	8	10	12	14	16	18	20	22	24	26	28	30	32
WAIST	23.5	24.5	25.5	26.5	27.5	28.5	30	31.5	33	34.5	37	39	41	43	45.25	47.5	49.75	52
HIPS	34.5	35.5	36.5	37.5	38.5	39.5	41	42.5	44	46	48	50	52	54	56.5	59	61.5	64
LENGTH	18	18	18	18	18	18	18.5	18.5	18.5	19	19	19	19	19	20	20	20	20

Size guide is based on the suggested design & wearing ease for this style. You can also choose the size according to your desired finished garment measurements, blending between sizes as needed. For best results, sew a test garment in a similar fabric to adjust your pattern.

Recommended Fabric: FC1270 Chocolate/Steel Blue Animal Fur Print Cotton-Lycra Twill

We love creating these free patterns for the community and we want to keep them free! In return, we hope you check out MoodFabrics.com for your next project!

Want to use one of our patterns to make a garment to sell? Our patterns are royalty-free! We just ask that you credit us with:

MoodSewciety.com

or

MoodFabrics.com

in your product description.

FOR SEWING INSTRUCTIONS
AND MORE INFORMATION:

Scan the QR code or visit
MoodSewciety.com and search
“MDF384”



1/2" seam allowances (SA's) included
unless stated otherwise.

REMEMBER TO SHARE YOUR
MADE WITH MOOD LOOK!

Tag us and use:

#MoodDionPattern

for a shot at being featured on our
social media



@mood.fabrics



@moodfabrics



@Mood_Fabrics



@moodfabrics



@moodfabrics

©2024 MoodFabrics.com / MoodSewciety.com
Mass production, resale, or distribution of this
pattern in any form is strictly prohibited.

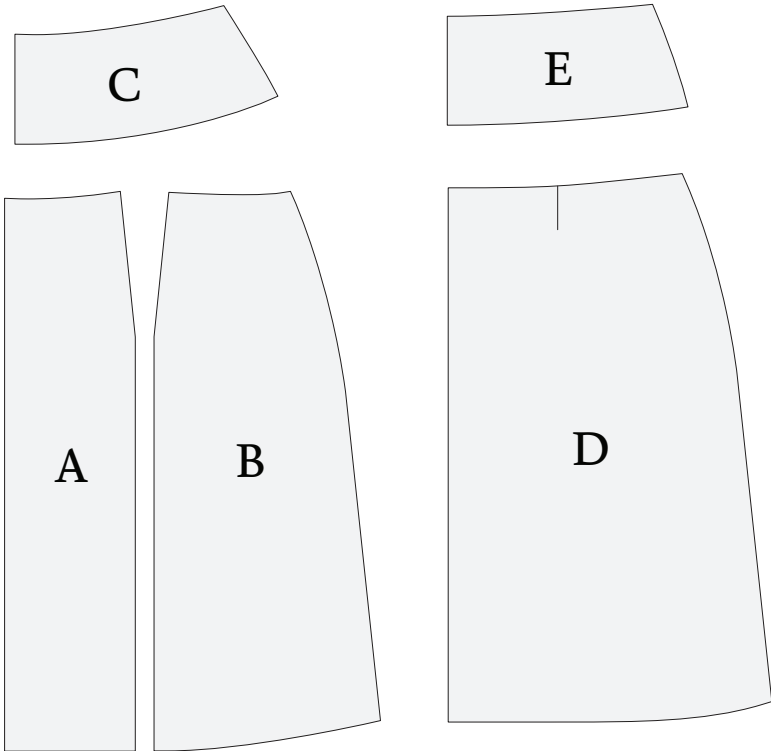
mood SEWCİETY

♥ The Mood Sewciety Team



“The Dion Skirt”
Ladies Sizes 00 to 32

A	BACK CENTER FABRIC - CUT 2 MIRRORED
B	BACK SIDE FABRIC - CUT 2 MIRRORED
C	BACK FACING FABRIC - CUT 2 MIRRORED
D	FRONT FABRIC - CUT 1 ON FOLD
E	FRONT FACING FABRIC - CUT 1 ON FOLD



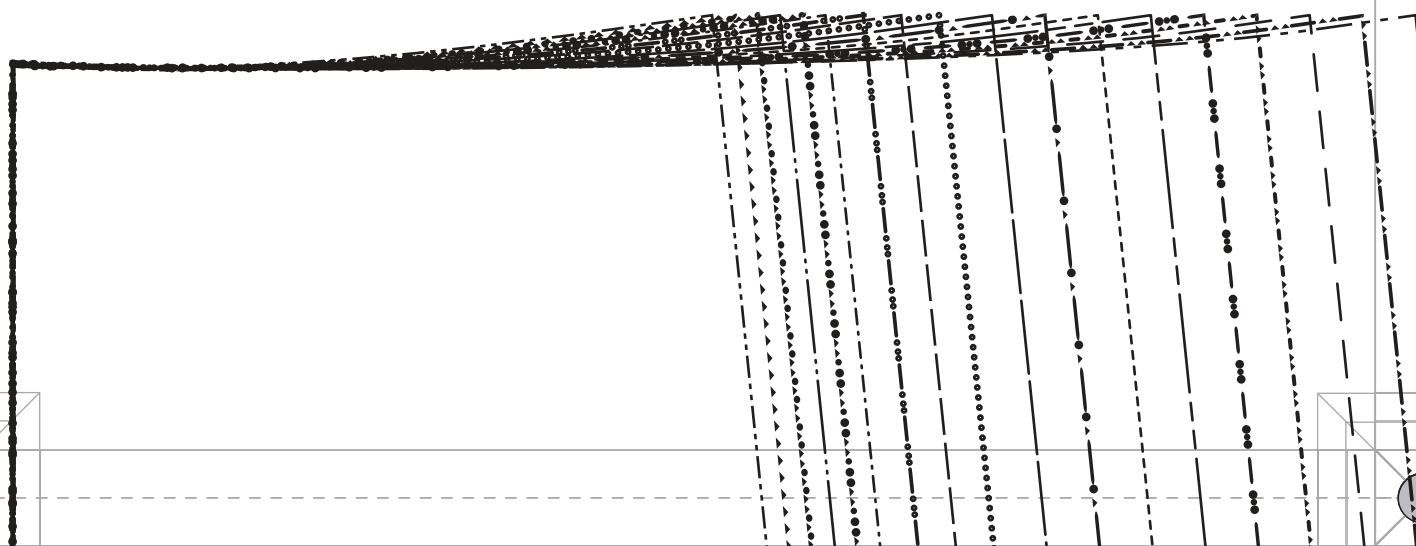
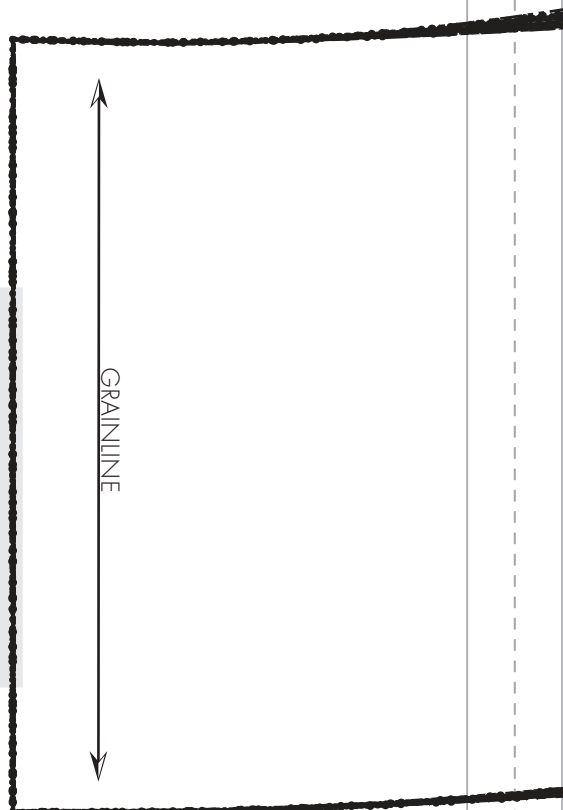
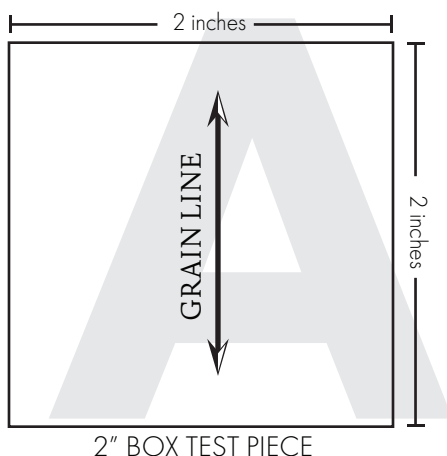
Size Line Key	
SIZE 00	SIZE 16
SIZE 0	SIZE 18
SIZE 2	SIZE 20
SIZE 4	SIZE 22
SIZE 6	SIZE 24
SIZE 8	SIZE 26
SIZE 10	SIZE 28
SIZE 12	SIZE 30
SIZE 14	SIZE 32

Size Line Key

SIZE 00	SIZE 16
SIZE 0	SIZE 18
SIZE 2	SIZE 20
SIZE 4	SIZE 22
SIZE 6	SIZE 24
SIZE 8	SIZE 26
SIZE 10	SIZE 28
SIZE 12	SIZE 30
SIZE 14	SIZE 32



#MoodDionPattern
"The Dion Skirt"
MDF384





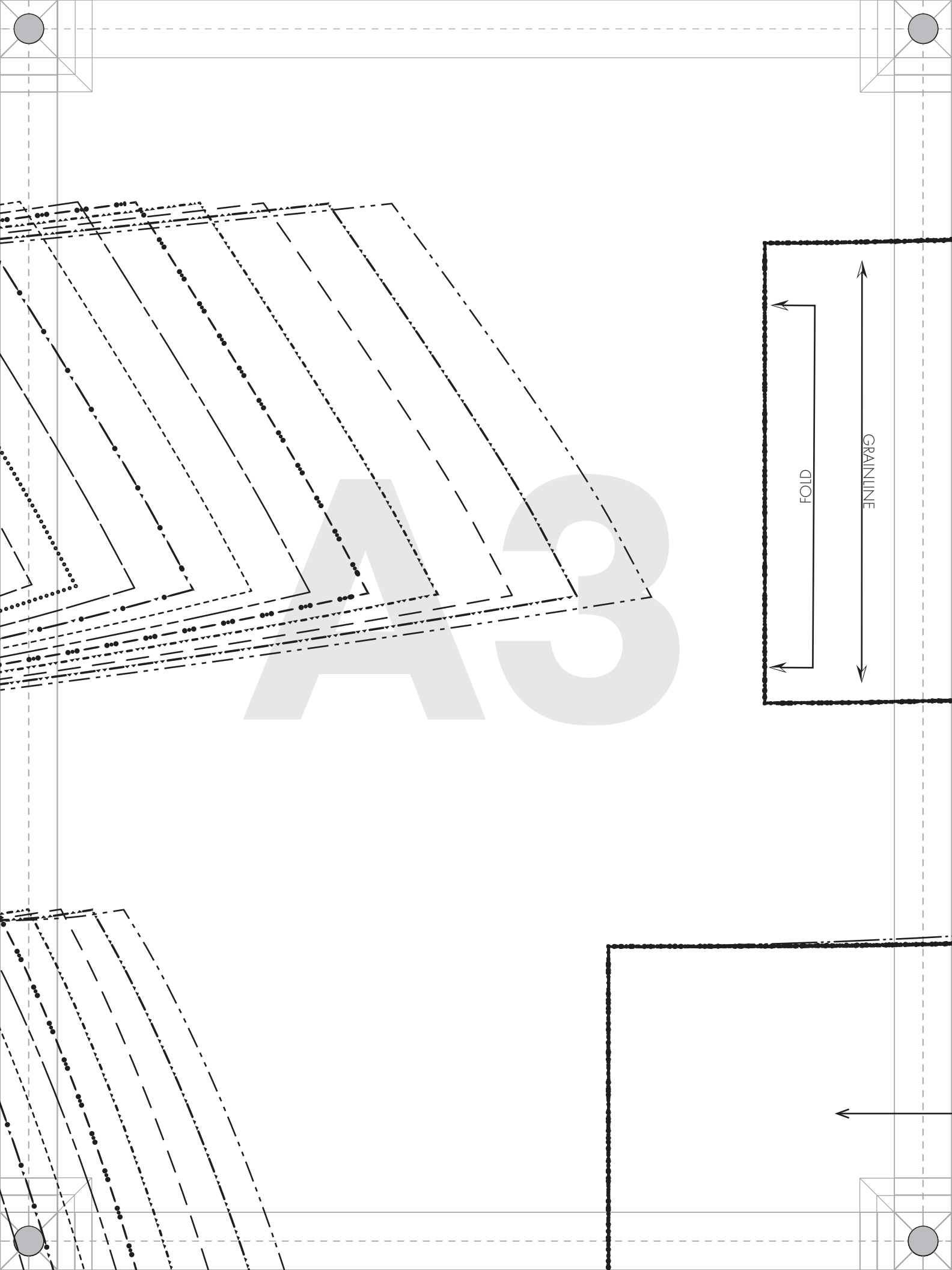
#MoodDionPattern

“The Dion Skirt”
MDF384

C - BACK FACING
Cut 2 mirrored

Ladies Sizes 00 to 32

1/2" seam allowances (SA's) included





#MoodDionPattern

**“The Dion Skirt”
MDF384**

E - FRONT FACING

Cut 1 on fold

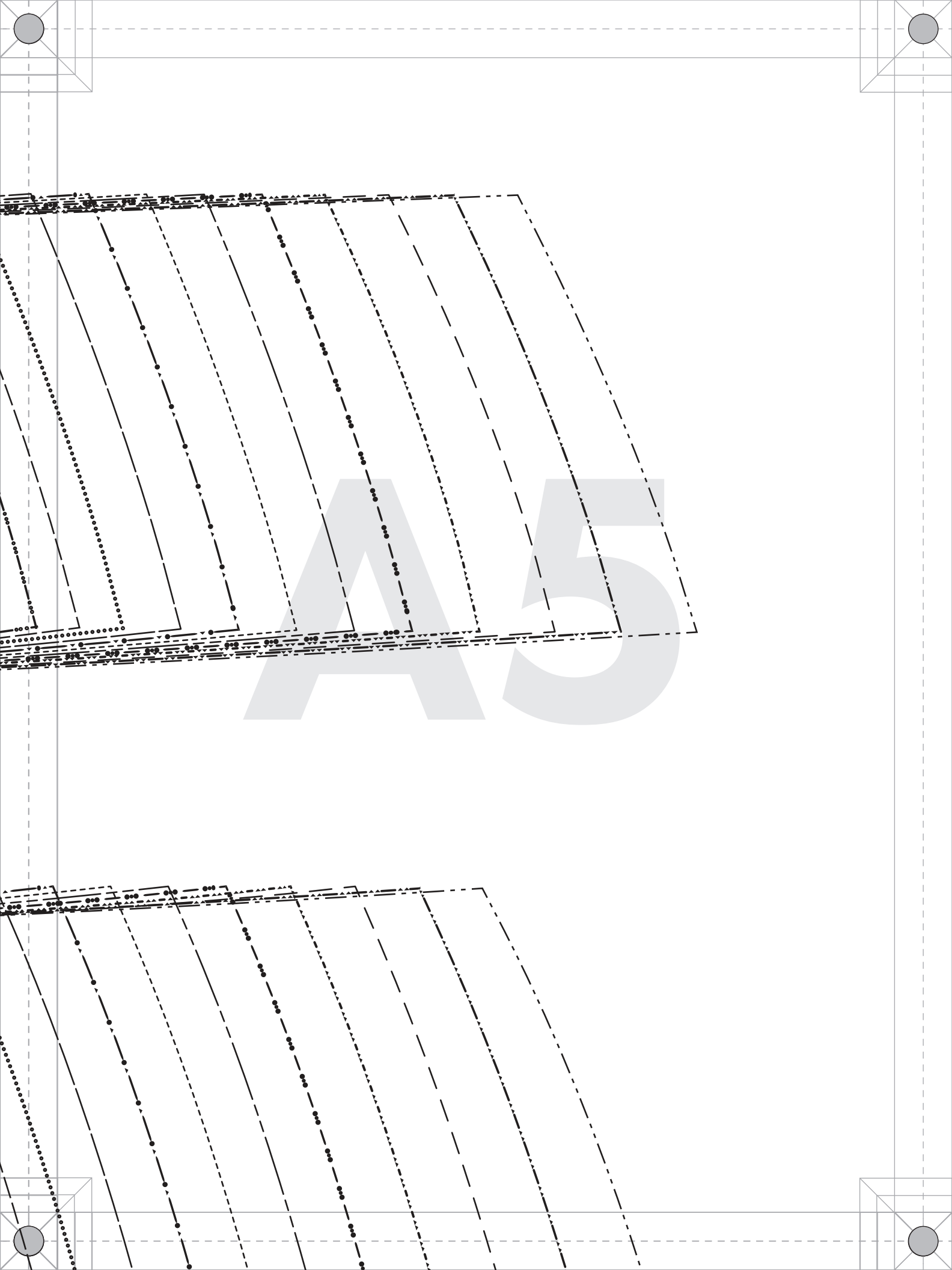
Ladies Sizes 00 to 32

1/2" seam allowances (SA's) included

00 0 2 4 6 8 10 12 14 16 18 20 22 24 26 28 30 32

PLEAT

Fold 1" towards center





#MoodDionPattern

“The Dion Skirt”
MDF384

A - BACK CENTER
Cut 2 mirrored

Ladies Sizes 00 to 32

1/2" seam allowances (SA's) included

1" Hem allowance included





#MoodDionPattern

“The Dion Skirt”

MDF384

B - BACK SIDE

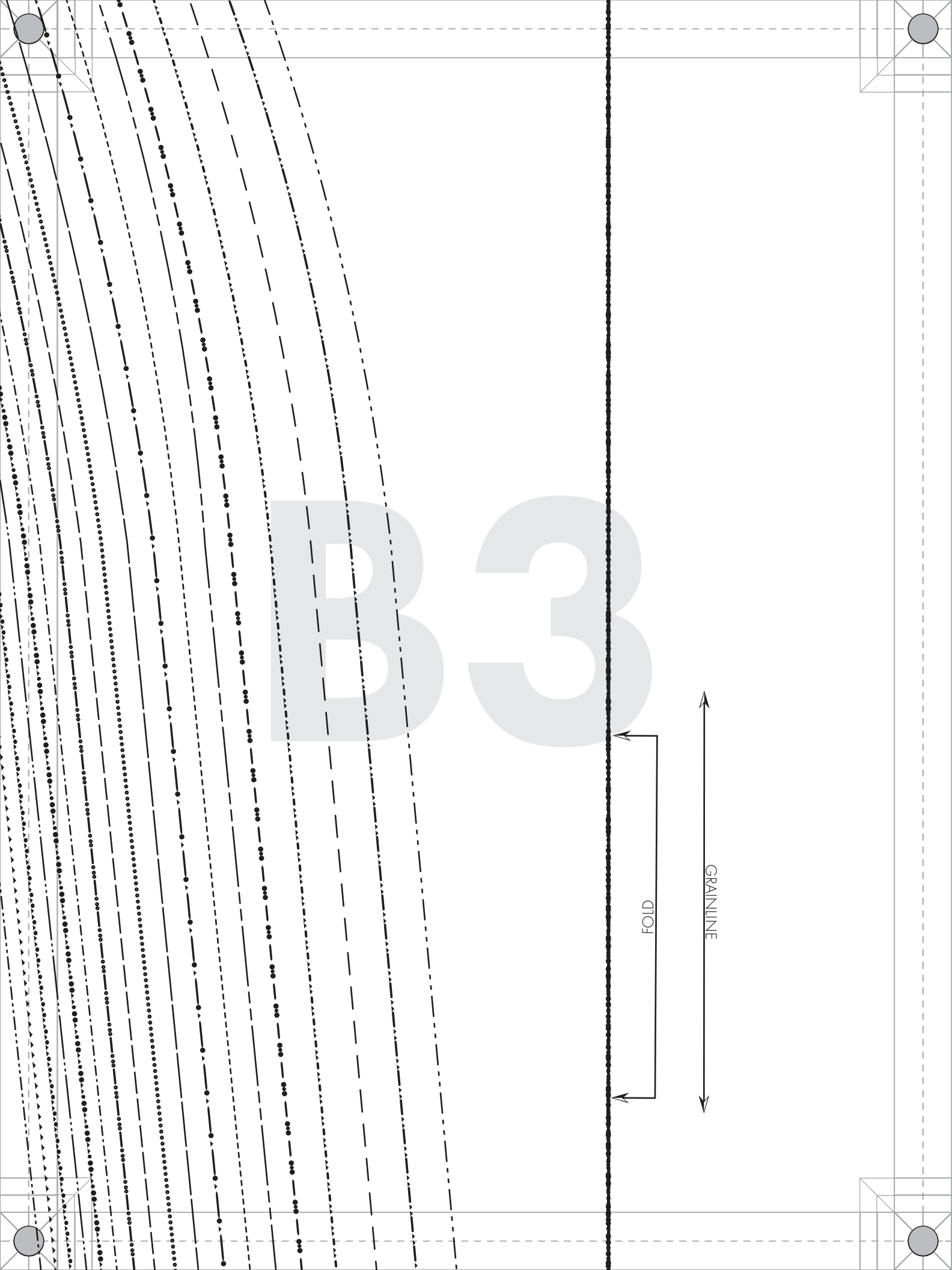
Cut 2 mirrored

Ladies Sizes 00 to 32

1/2" seam allowances (SA's) included

1" Hem allowance included

GRAINLINE





#MoodDionPattern

“The Dion Skirt”

MDF384

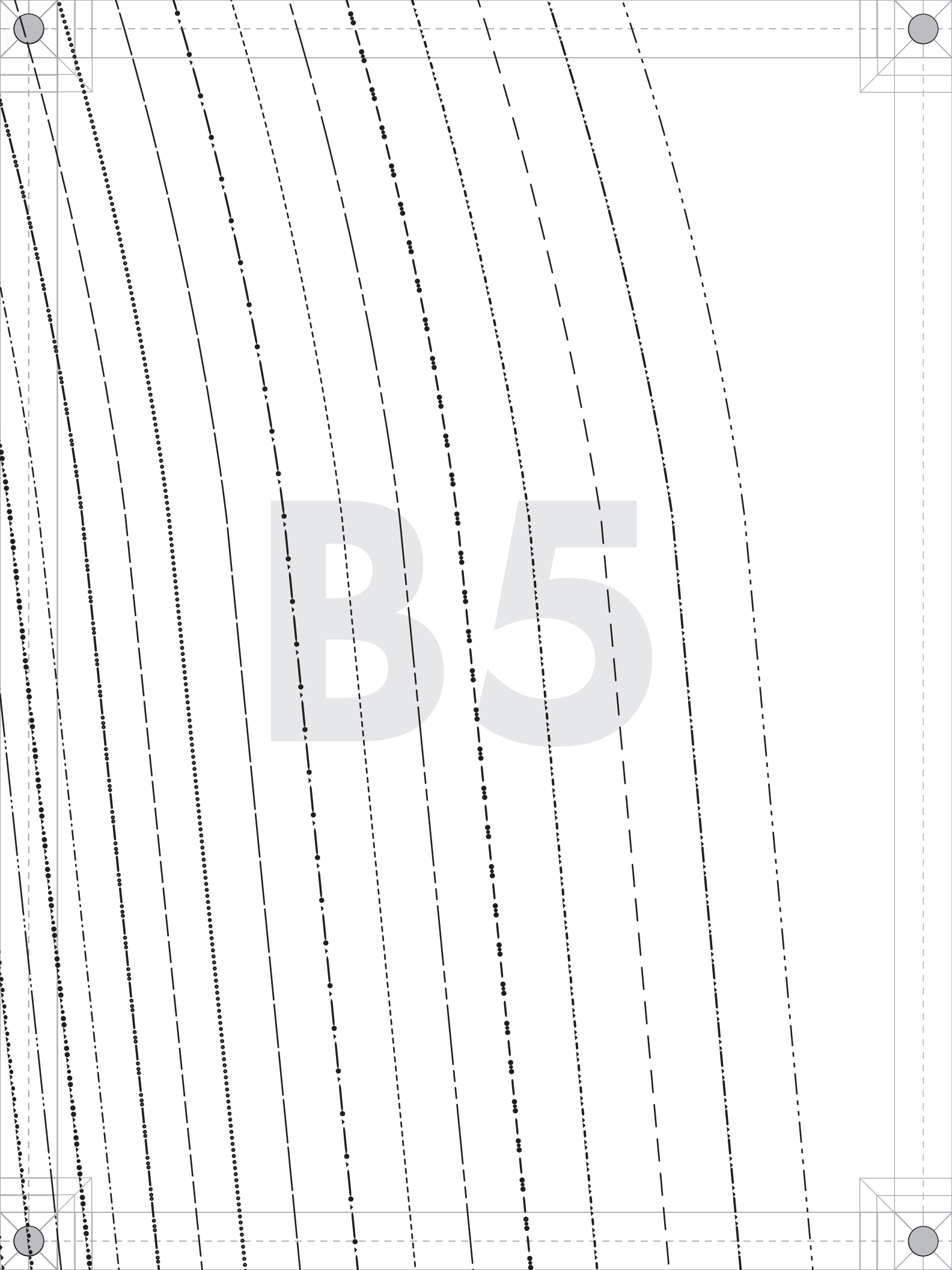
D - FRONT

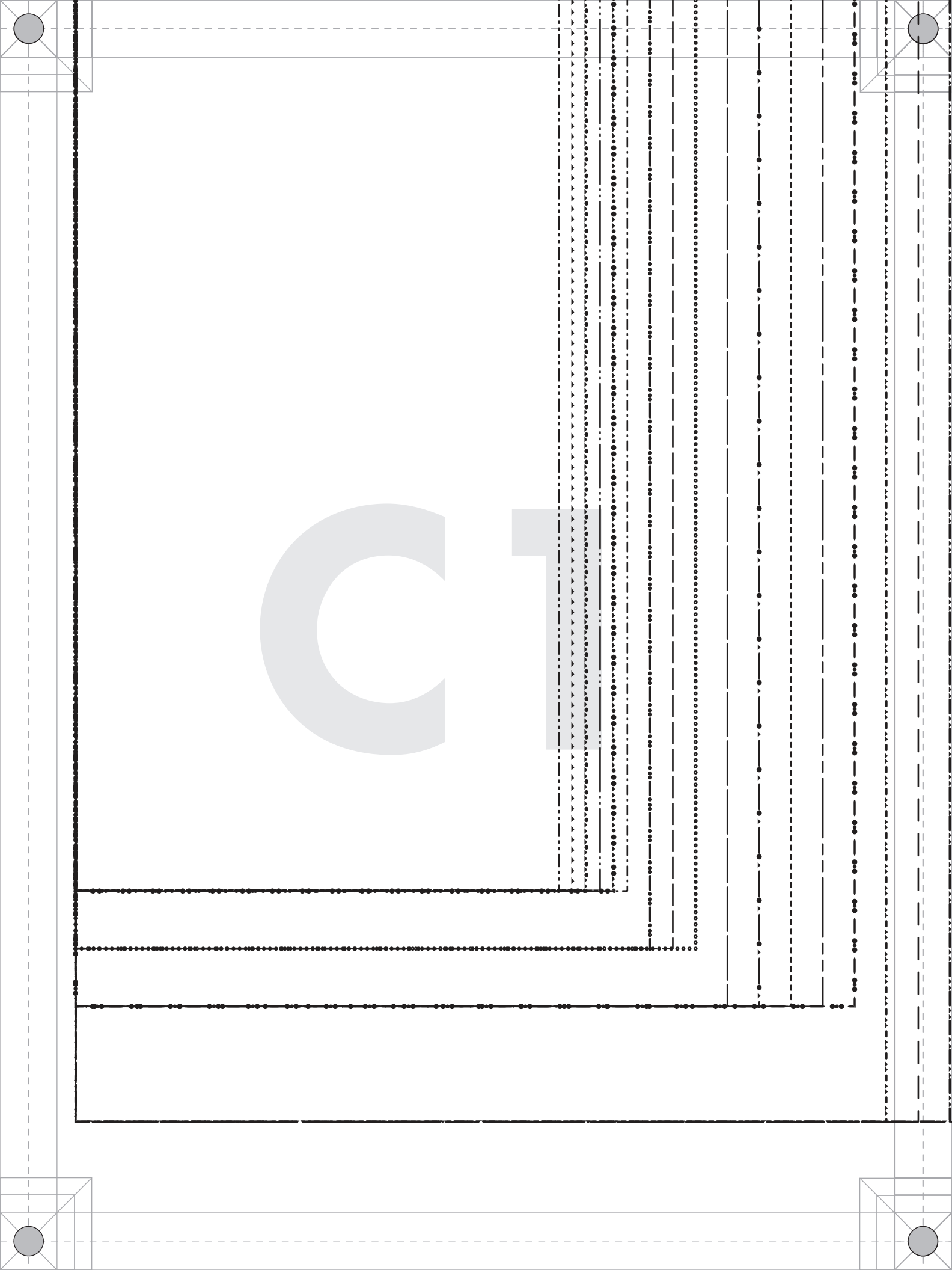
Cut 1 on fold

Ladies Sizes 00 to 32

1/2" seam allowances (SA's) included

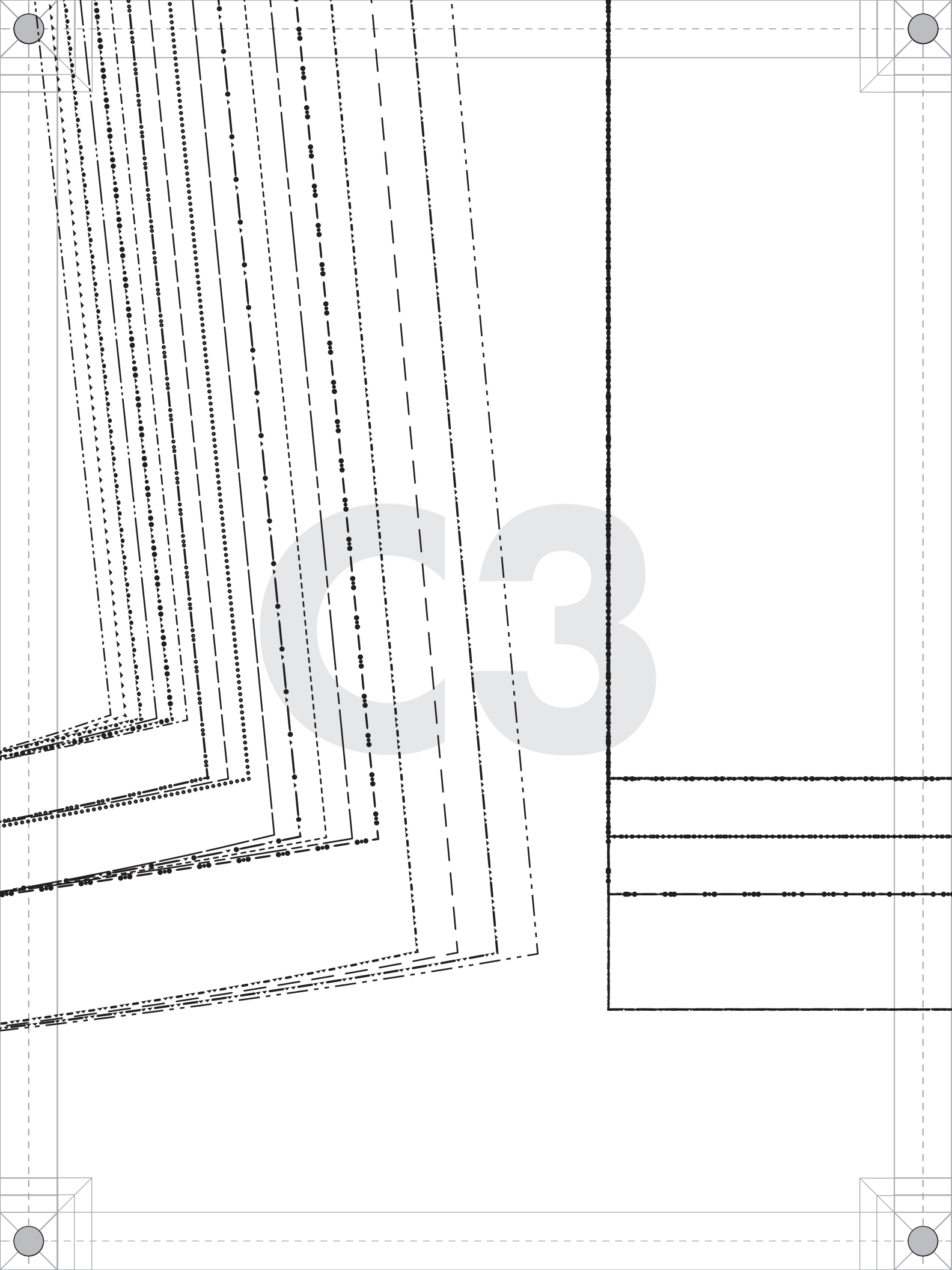
1" Hem allowance included





c2





C4

