



#MoodCherPattern



Print only this page first to check accuracy.
The Mood square above should measure 2 inches. Print "actual size" in "portrait" mode (not auto center). Formatted for both US Letter & A4 paper sizes.

Formatted for both US Letter & A4 Paper

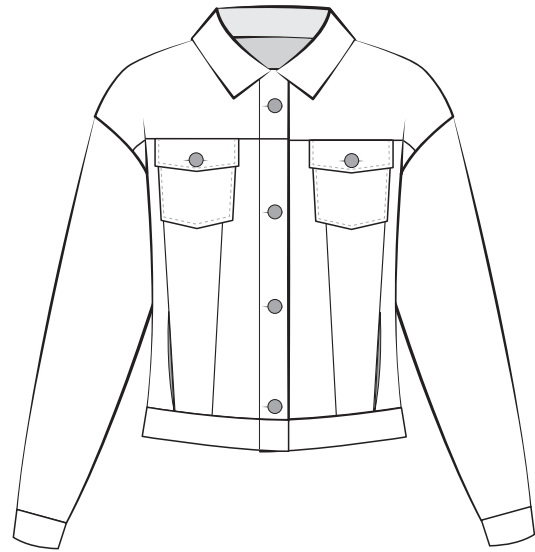
Trimless Option: This is the fastest! No trimming needed! Place left-side margins over right-side margins, overlapping dashed lines and dots. In the same fashion, top margins will overlap bottom margins. Slight unprinted gaps are normal for this method.

Trimmed Option: This removes any unprinted gaps. Trim along the top and right margins at the dashed lines. Overlap the trimmed margins to the untrimmed margins, matching dashed lines and dots.

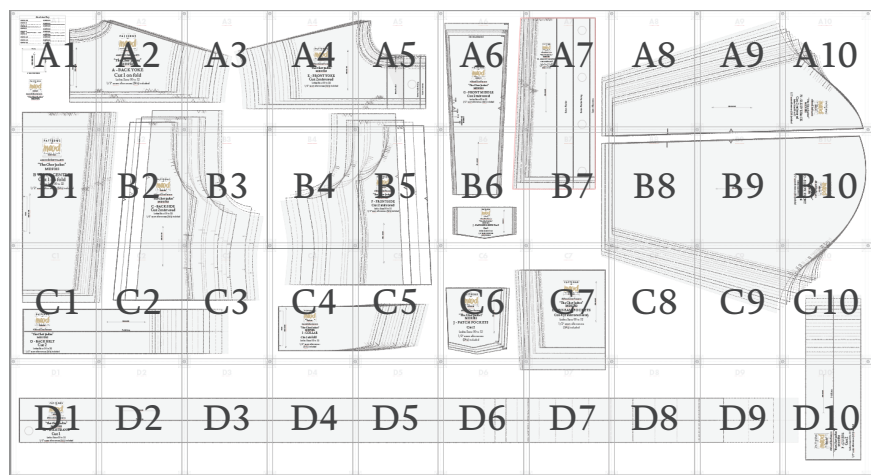
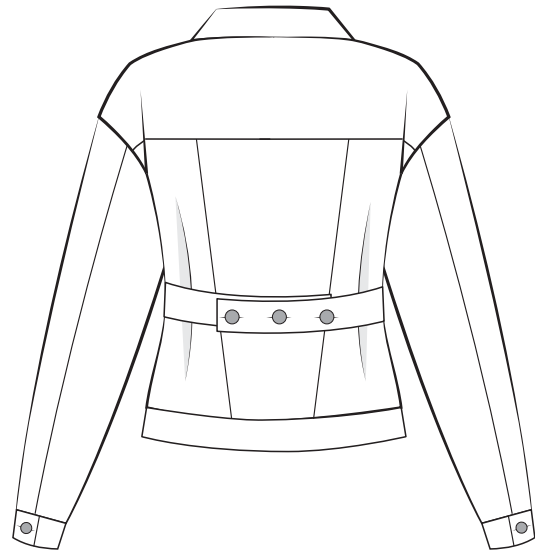
Tip! Build rows first, then join the rows together as you go.

"The Cher Jacket"

Front



Back





#MoodCherPattern

“The Cher Jacket”

Ladies Sizes 00 to 32

BODY MEASUREMENTS IN INCHES (Chart 1)

SINGLE SIZES	00	0	2	4	6	8	10	12	14	16	18	20	22	24	26	28	30	32
BUST	31	32	33	34	35	36	37.5	39	40.5	42.5	44.5	46.5	48.5	50.5	52.75	55	57.25	59.5
WAIST	23	24	25	26	27	28	29.5	31	32.5	34.5	36.5	38.5	40.5	42.5	44.75	47	49.25	51.5
HIPS	34	35	36	37	38	39	40.5	42	43.5	45.5	47.5	49.5	51.5	53.5	56	58.5	61	63.5

APPROXIMATE FINISHED GARMENT MEASUREMENTS - IN INCHES (Chart 2)

SINGLE SIZES	00	0	2	4	6	8	10	12	14	16	18	20	22	24	26	28	30	32
BUST	41	42	43	44	45	46	47.5	49	50.5	52.5	54.5	56.5	58.5	60.5	62.75	65	67.25	69.5
WAIST	37	38	39	40	41	42	43.5	45	46.5	48.5	50.5	52.5	54.5	56.5	58.75	61	63.25	65.5
LENGTH	21	21	21	21	21	21	21.5	21.5	21.5	22	22	22	22	22	23	23	23	23

Size guide is based on the suggested design & wearing ease for this style. You can also choose the size according to your desired finished garment measurements, blending between sizes as needed. For best results, sew a test garment in a similar fabric to adjust your pattern.

Recommended Fabric: FC12706 Chocolate/Steel Blue Animal Fur Print Cotton-Lycra Twill

We love creating these free patterns for the community and we want to keep them free! In return, we hope you check out MoodFabrics.com for your next project!

Want to use one of our patterns to make a garment to sell? Our patterns are royalty-free! We just ask that you credit us with:
MoodSewciety.com
or
MoodFabrics.com
in your product description.

FOR SEWING INSTRUCTIONS
AND MORE INFORMATION:

Scan the QR code or visit
MoodSewciety.com and search
“MDF383”



1/2" seam allowances (SA's) included
unless stated otherwise.

REMEMBER TO SHARE YOUR
MADE WITH MOOD LOOK!

Tag us and use:

#MoodCherPattern

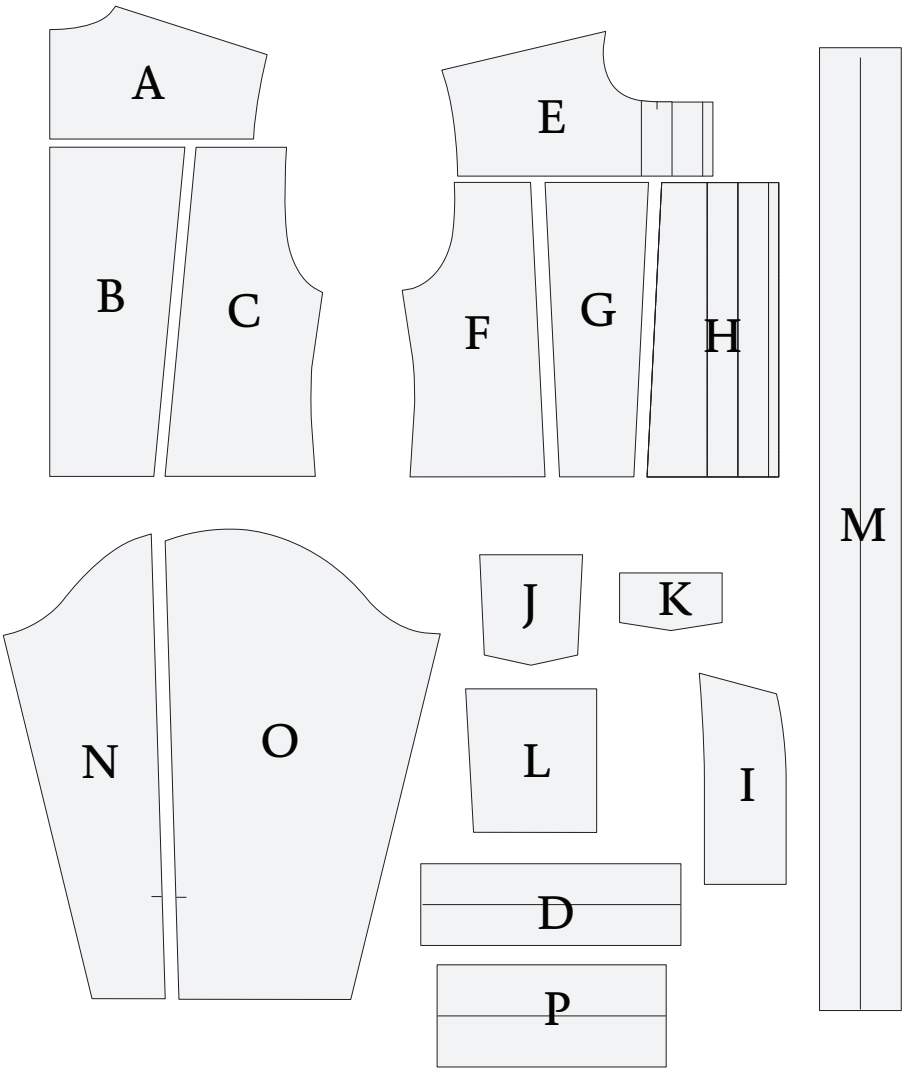
for a shot at being featured on our
social media

- @mood.fabrics
- @moodfabrics
- @Mood_Fabrics
- @moodfabrics
- @moodfabrics



“The Cher Jacket”
Ladies Sizes 00 to 32

A	BACK YOKE FABRIC - CUT 1 ON FOLD
B	BACK CENTER FABRIC - CUT 1 ON FOLD
C	BACK SIDE FABRIC - CUT 2 MIRRORED
D	BACK BELT FABRIC - CUT 2
E	FRONT YOKE FABRIC - CUT 2 MIRRORED
F	FRONT SIDE FABRIC - CUT 2 MIRRORED
G	FRONT MIDDLE FABRIC - CUT 2 MIRRORED
H	FRONT CENTER FABRIC - CUT 2 MIRRORED
I	COLLAR FABRIC - CUT 2 ON FOLD
J	PATCH POCKETS FABRIC - CUT 2
K	PATCH POCKETS FLAP FABRIC - CUT 2
L	INSEAM POCKETS FABRIC - CUT 2 MIRRORED SETS
M	WAISTBAND FABRIC - CUT 1
N	SLEEVE BACK FABRIC - CUT 2 MIRRORED
O	SLEEVE FRONT FABRIC - CUT 2 MIRRORED
P	CUFFS FABRIC - CUT 2



Size Line Key	
SIZE 00	SIZE 16
SIZE 0	SIZE 18
SIZE 2	SIZE 20
SIZE 4	SIZE 22
SIZE 6	SIZE 24
SIZE 8	SIZE 26
SIZE 10	SIZE 28
SIZE 12	SIZE 30
SIZE 14	SIZE 32

PATTERNS

BY

mood

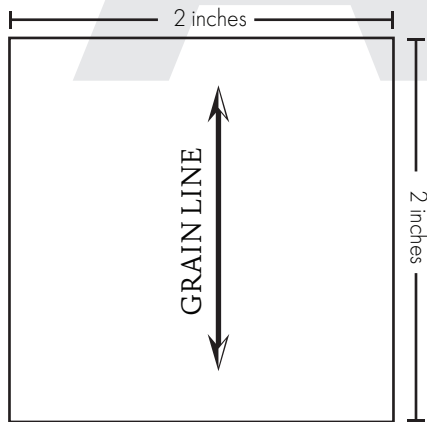
DESIGNER FABRICS

MDF383

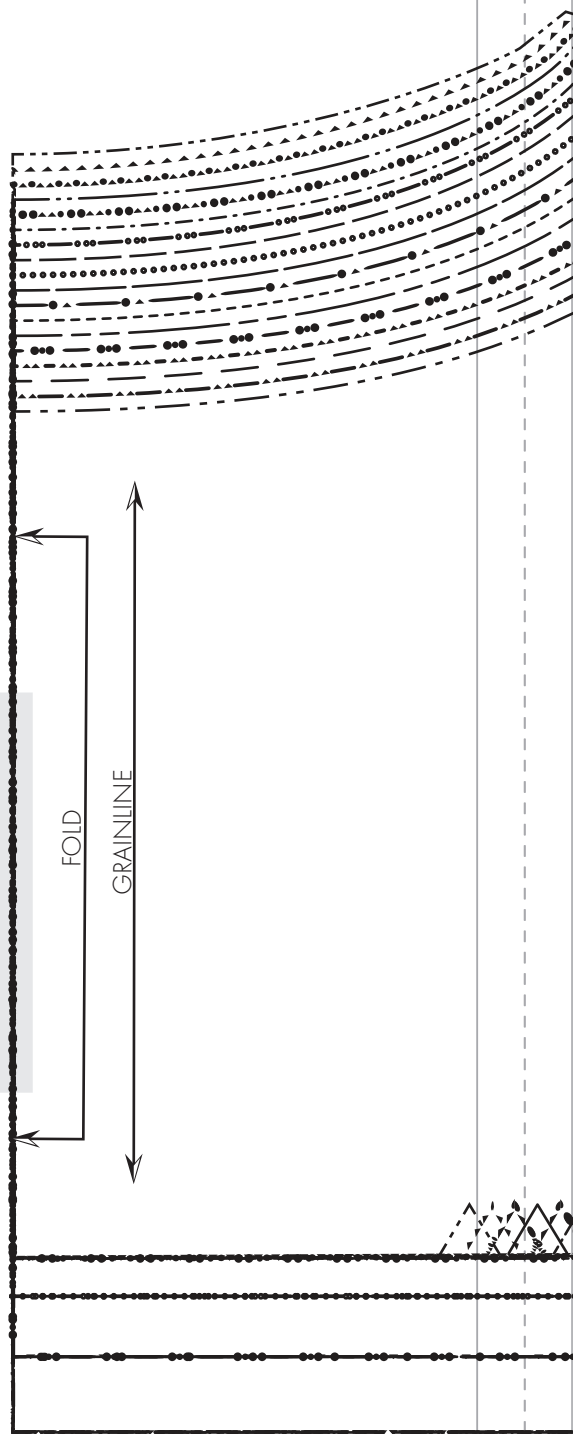
#MoodCherPattern
“The Cher Jacket”
MDF383

Size Line Key

SIZE 00	SIZE 16
SIZE 0	SIZE 18
SIZE 2	SIZE 20
SIZE 4	SIZE 22
SIZE 6	SIZE 24
SIZE 8	SIZE 26
SIZE 10	SIZE 28
SIZE 12	SIZE 30
SIZE 14	SIZE 32



2" BOX TEST PIECE





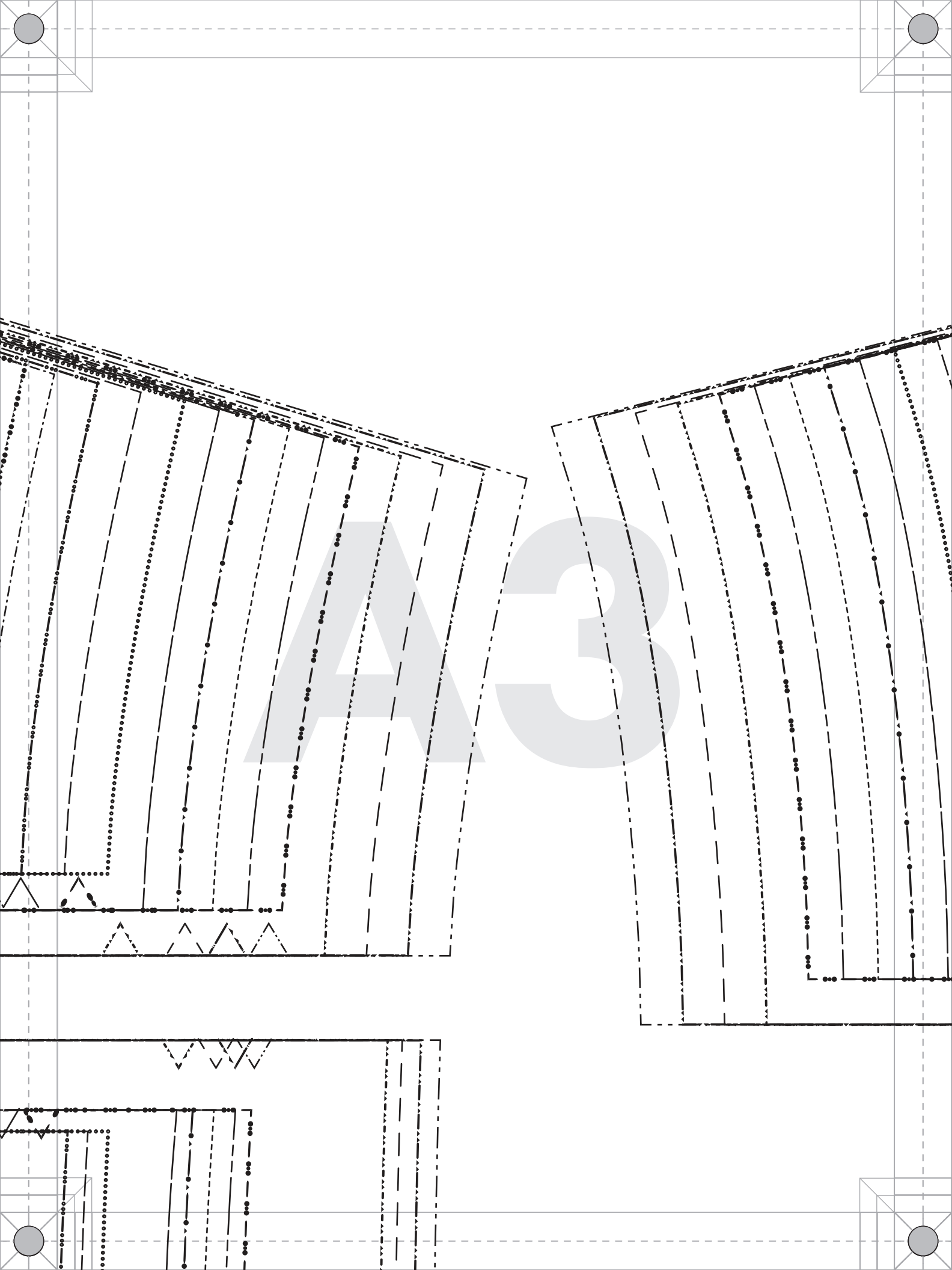
#MoodCherPattern

**“The Cher Jacket”
MDF383**

**A - BACK YOKE
Cut 1 on fold**

Ladies Sizes 00 to 32

1/2" seam allowances (SA's) included



PATTERNS

BY

mood

DESIGNER FABRICS

MDF383

#MoodCherPattern

“The Cher Jacket”

MDF383

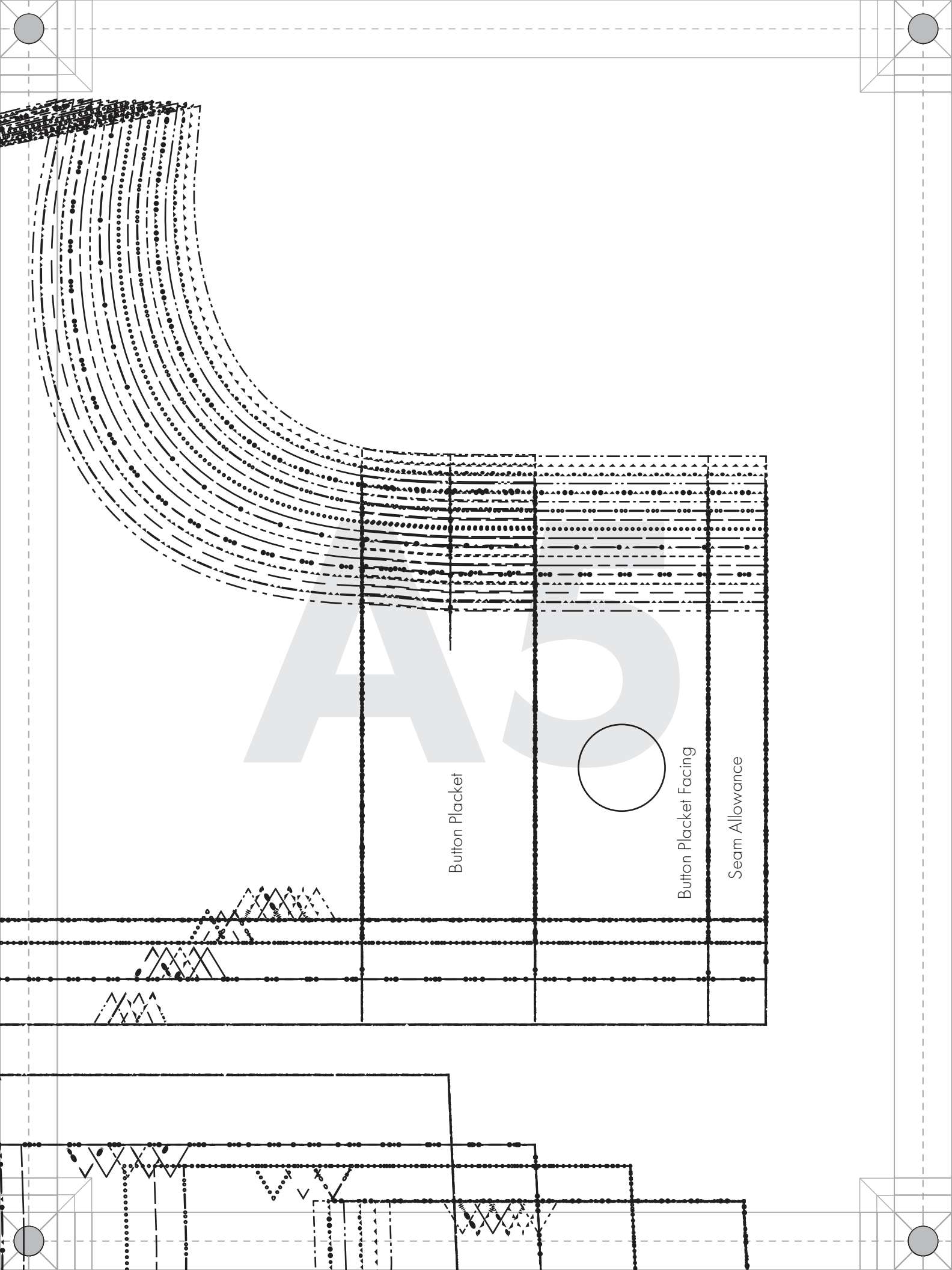
E - FRONT YOKE

Cut 2 mirrored

Ladies Sizes 00 to 32

1/2" seam allowances (SA's) included

GRAINLINE



Button Placket

Button Placket Facing

Seam Allowance

26-32

16-24

10-14

00-8

Patch Pocket Placement



#MoodCherPattern

“The Cher Jacket” MDF383

G - FRONT MIDDLE Cut 2 mirrored

Ladies Sizes 00 to 32

1/2" seam allowances (SA's) included

26-32

16-24

10-14

00-8

Inseam Pocket
Placement



#MoodCherPattern

"The Cher Jacket"
MDF383

H - FRONT CENTER

Cut 2 mirrored

Ladies Sizes 00 to 32

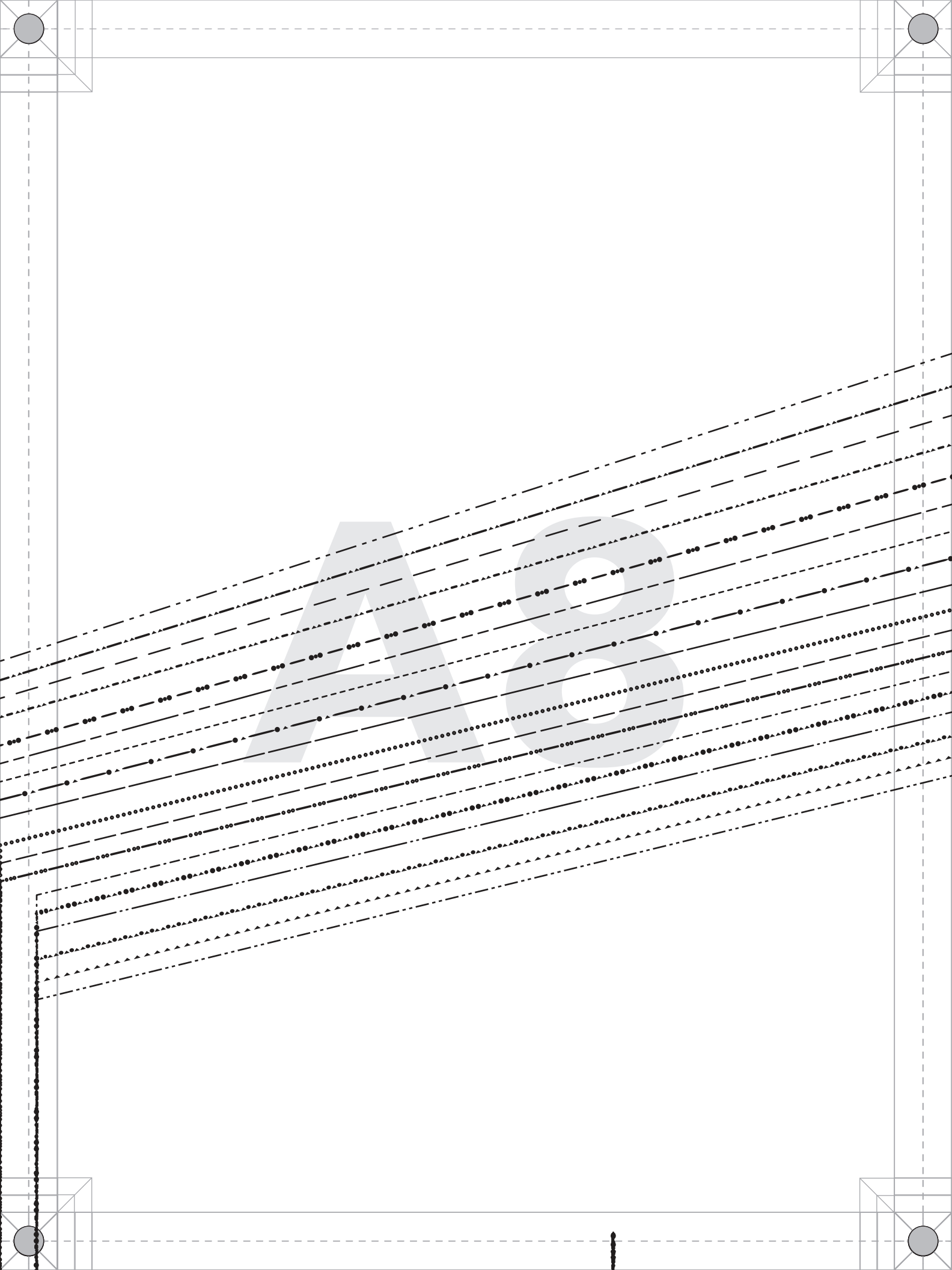
1/2" seam allowances
(SA's) included

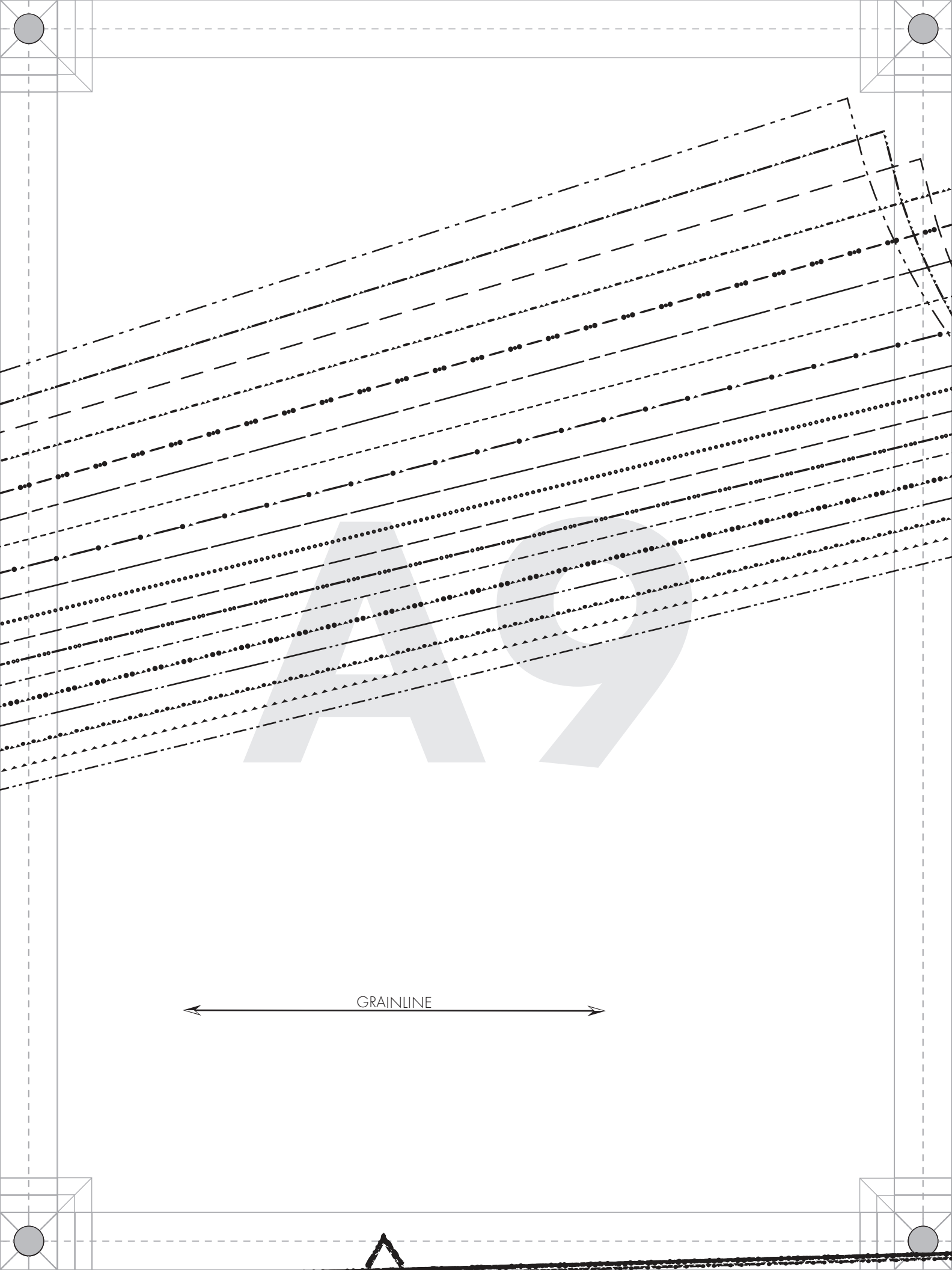
GRAINLINE

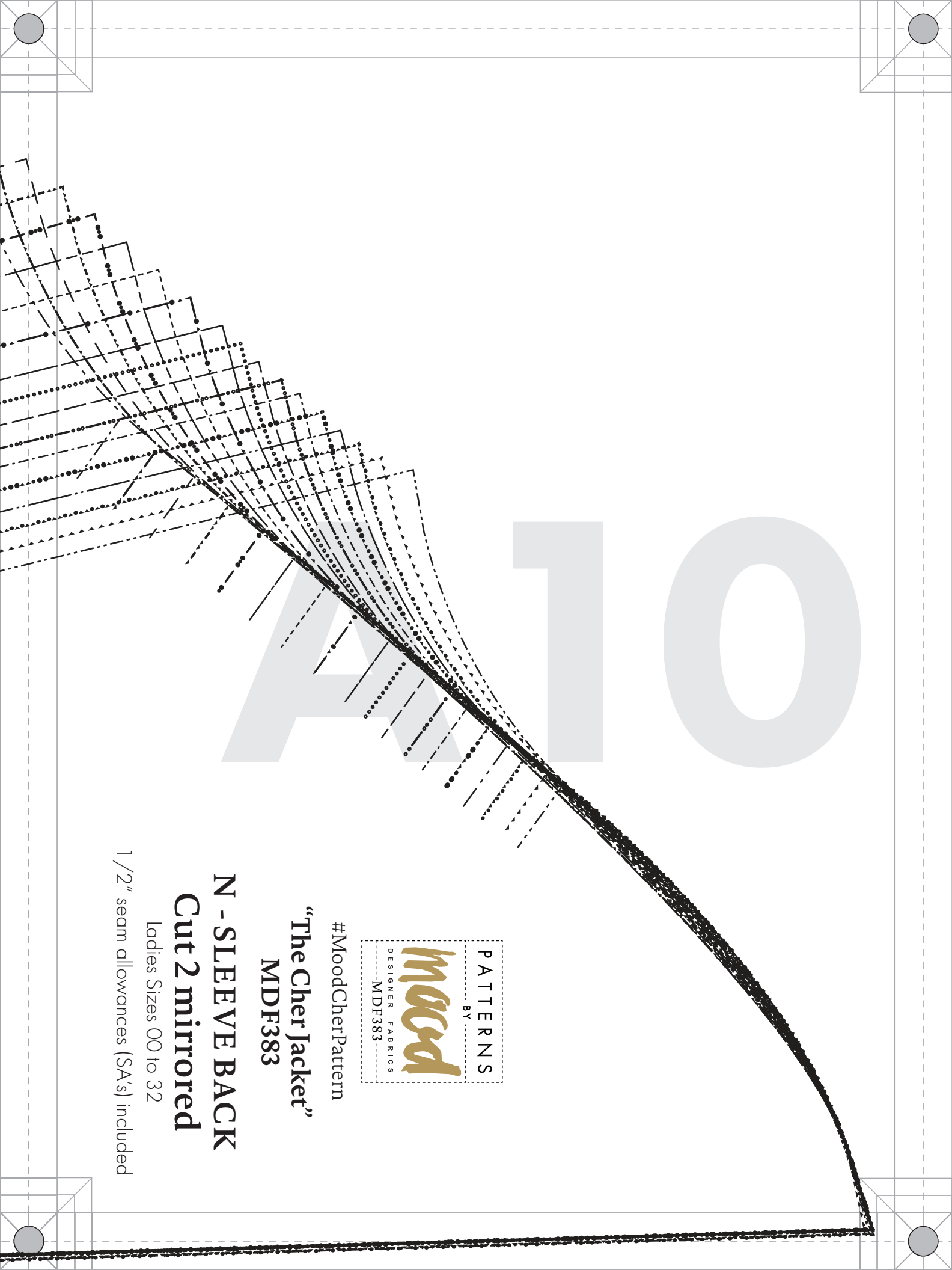
Button Placket

Button Placket Facing

Seam Allowance







#MoodCherPattern

“The Cher Jacket”
MDF383

N - SLEEVE BACK
Cut 2 mirrored

Ladies Sizes 00 to 32

1/2" seam allowances (SA's) included



#MoodCherPattern

“The Cher Jacket” MDF383

B - BACK CENTER Cut 1 on fold

Ladies Sizes 00 to 32

1/2" seam allowances (SA's) included





#MoodCherPattern

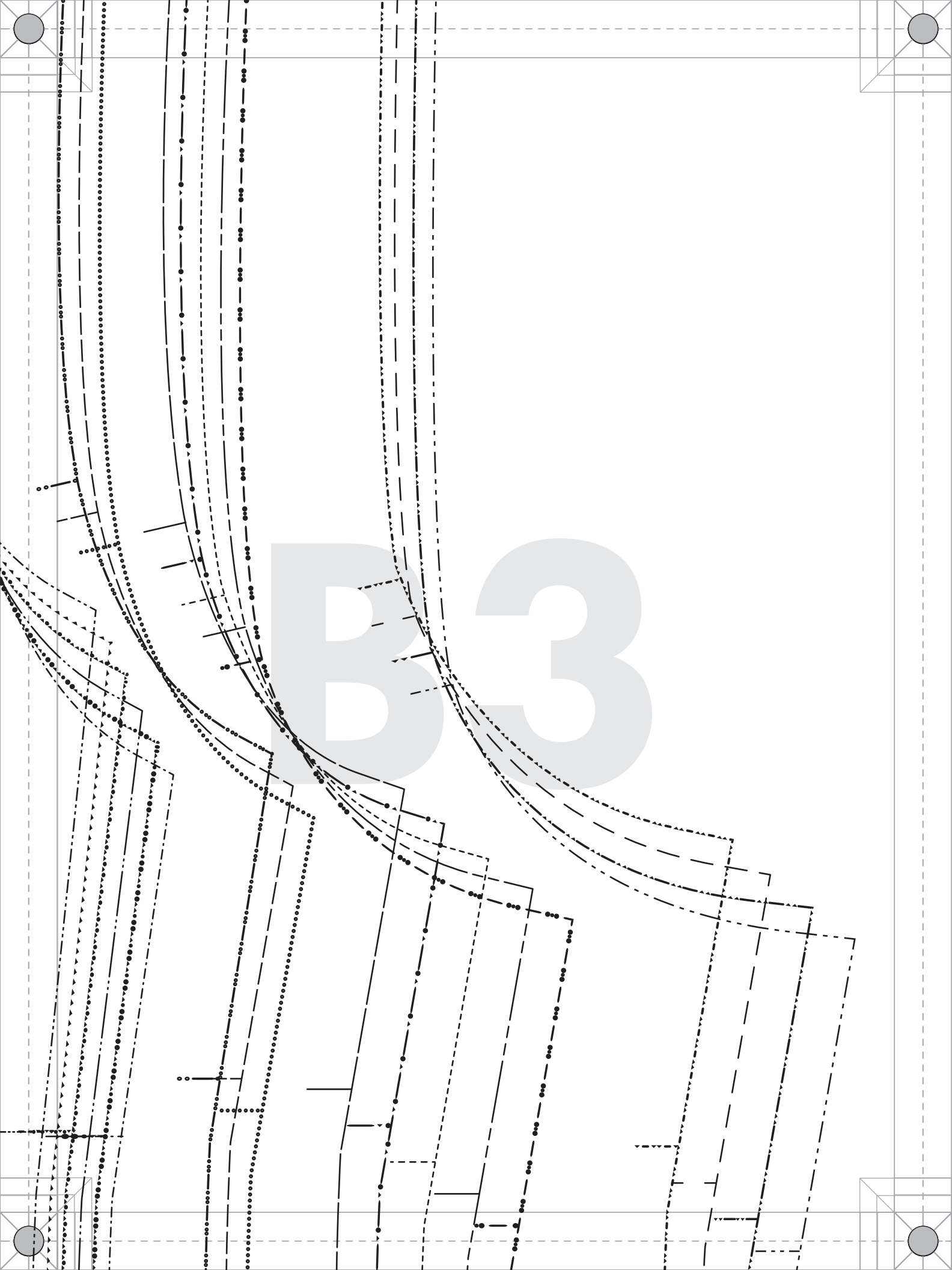
**“The Cher Jacket”
MDF383**

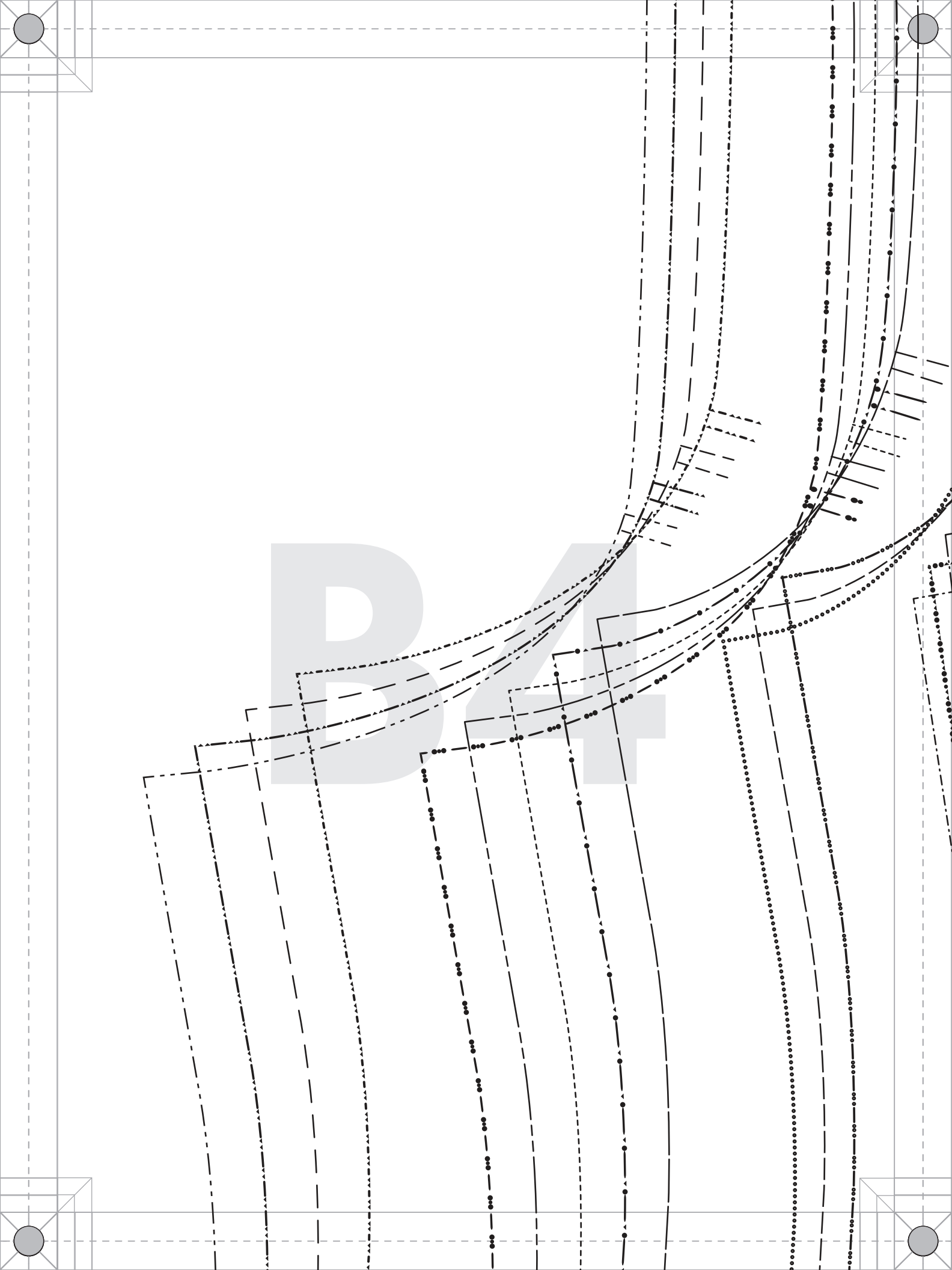
**C - BACK SIDE
Cut 2 mirrored**

Ladies Sizes 00 to 32

1/2" seam allowances (SA's) included

GRAINLINE







#MoodCherPattern

**“The Cher Jacket”
MDF383**

**F - FRONT SIDE
Cut 2 mirrored**

Ladies Sizes 00 to 32

1/2" seam allowances (SA's) included

GRAINLINE

GRAINLINE



#MoodCherPattern

“The Cher Jacket”
MDF383

K - PATCH POCKETS FLAP

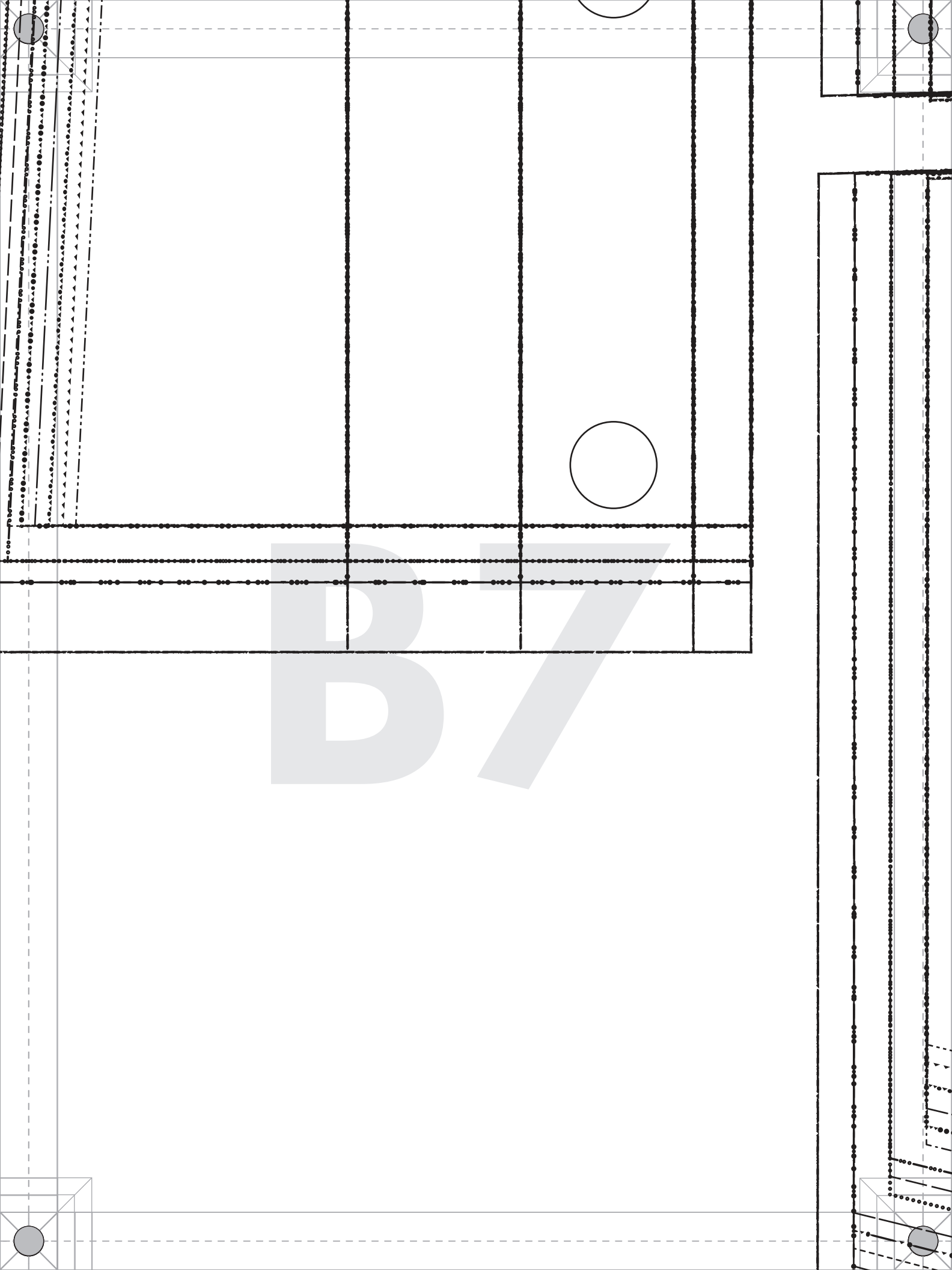
Cut 2

Ladies Sizes 00 to 32

1/2" seam allowances

(SA's) included

GRAINLINE



B8





#MoodCherPattern

“The Cher Jacket”
MDF383

O - SLEEVE FRONT

Cut 2 mirrored

Ladies Sizes 00 to 32

1/2" seam allowances (SA's) included

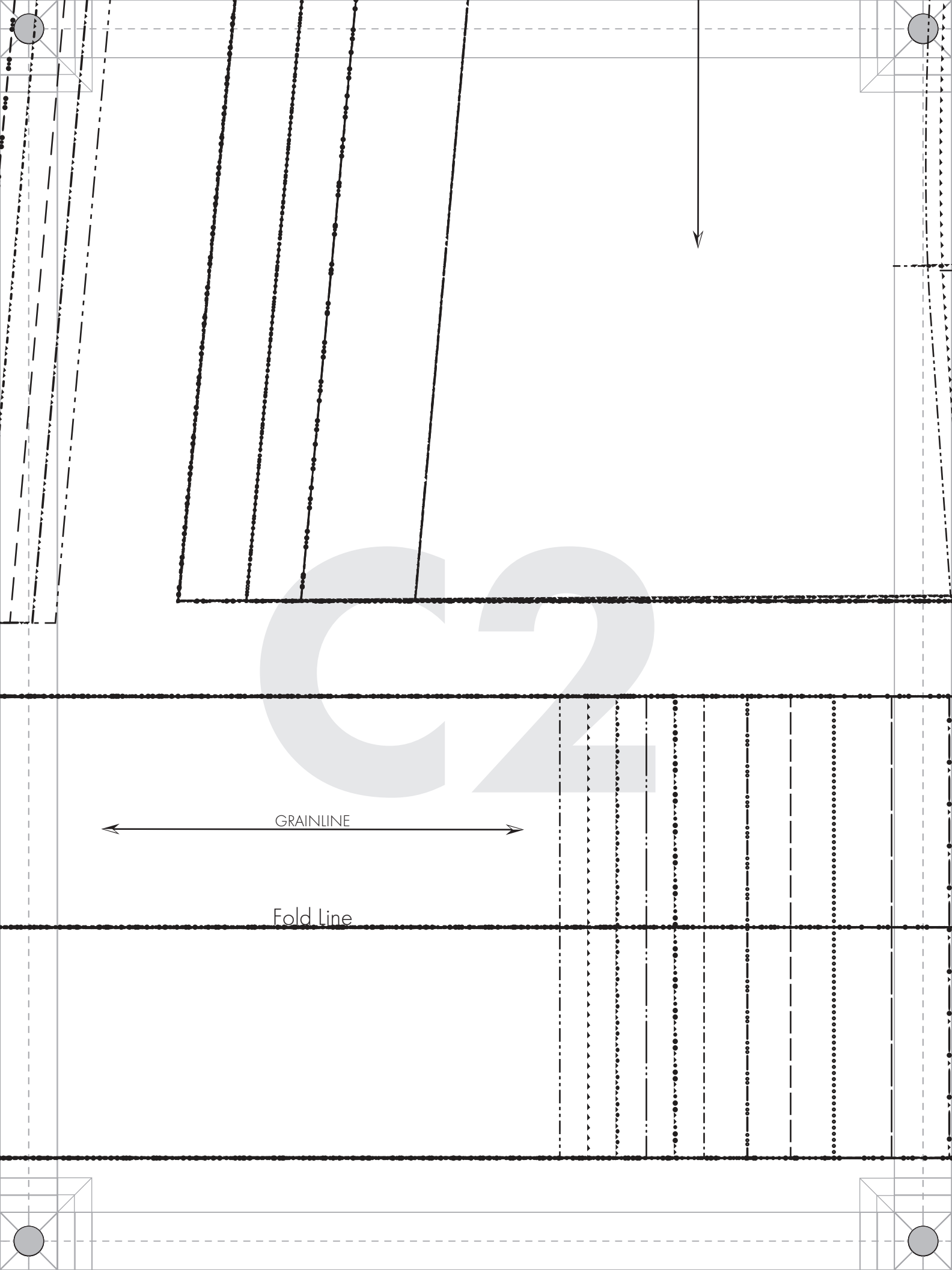


#MoodCherPattern

“The Cher Jacket”
MDF383
D - BACK BELT
Cut 2

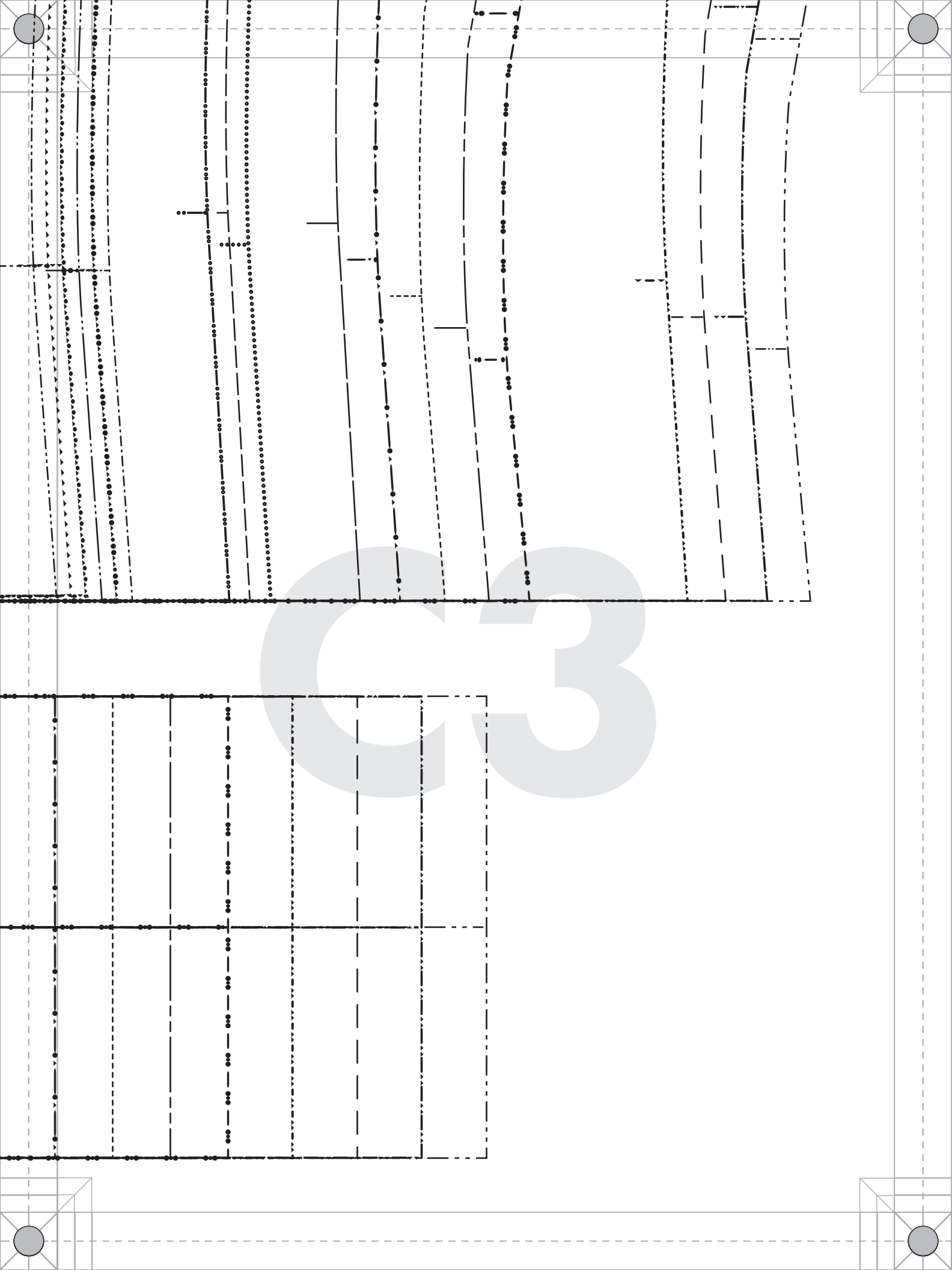
Ladies Sizes 00 to 32

1/2" seam allowances (SA's) included



GRAINLINE

Fold line





#MoodCherPattern

**“The Cher Jacket”
MDF383**

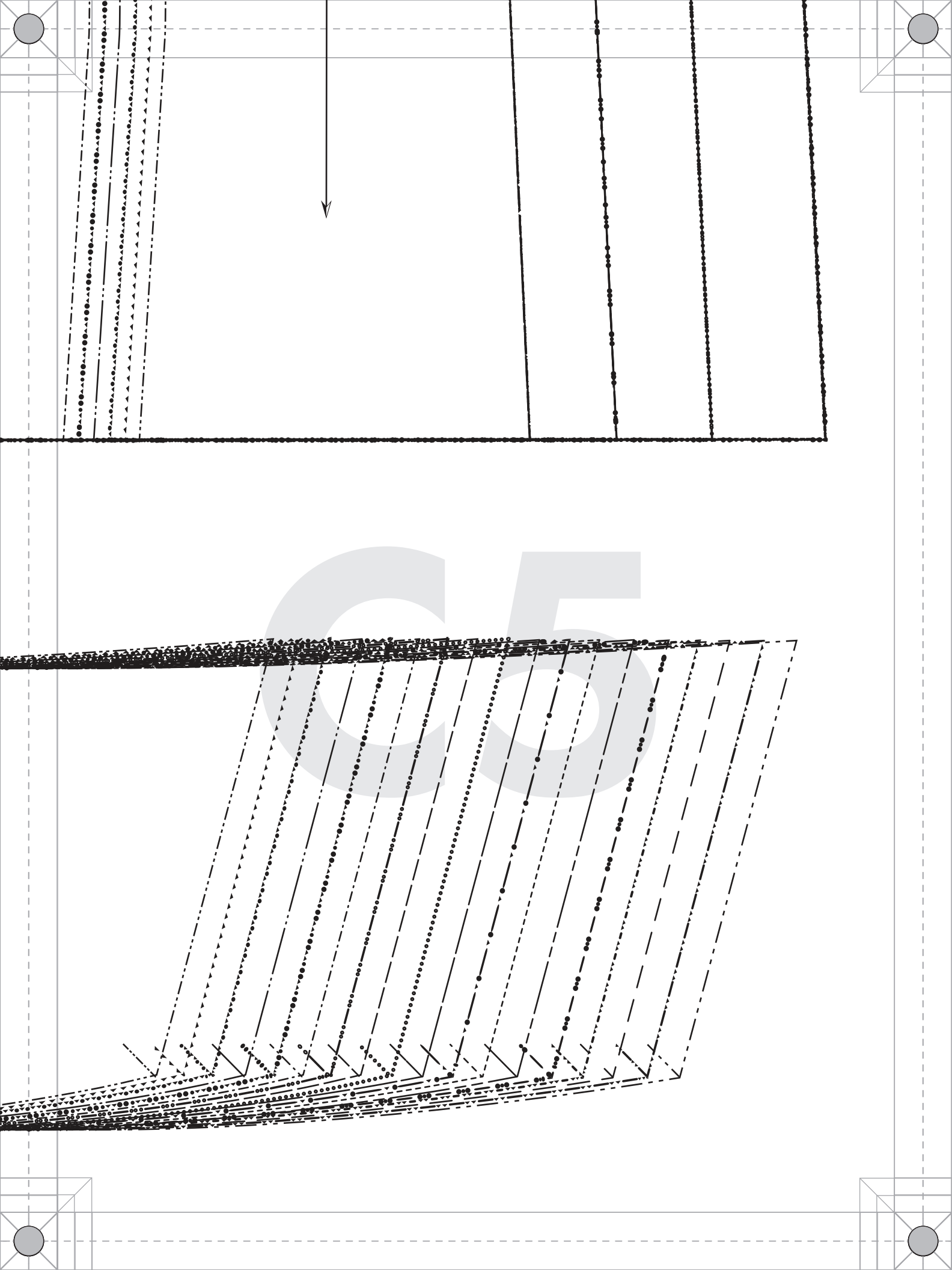
I - COLLAR

Cut 2 on fold

Ladies Sizes 00 to 32

1/2" seam allowances
(SA's) included







#MoodCherPattern

**“The Cher Jacket”
MDF383**

J - PATCH POCKETS

Cut 2

Ladies Sizes 00 to 32

1/2" seam allowances
(SA's) included

GRAINLINE

00-8

10-14

16-24

26-32



#MoodCherPattern

**“The Cher Jacket”
MDF383**

**L - INSEAM POCKETS
Cut 4 (2 mirrored sets)**

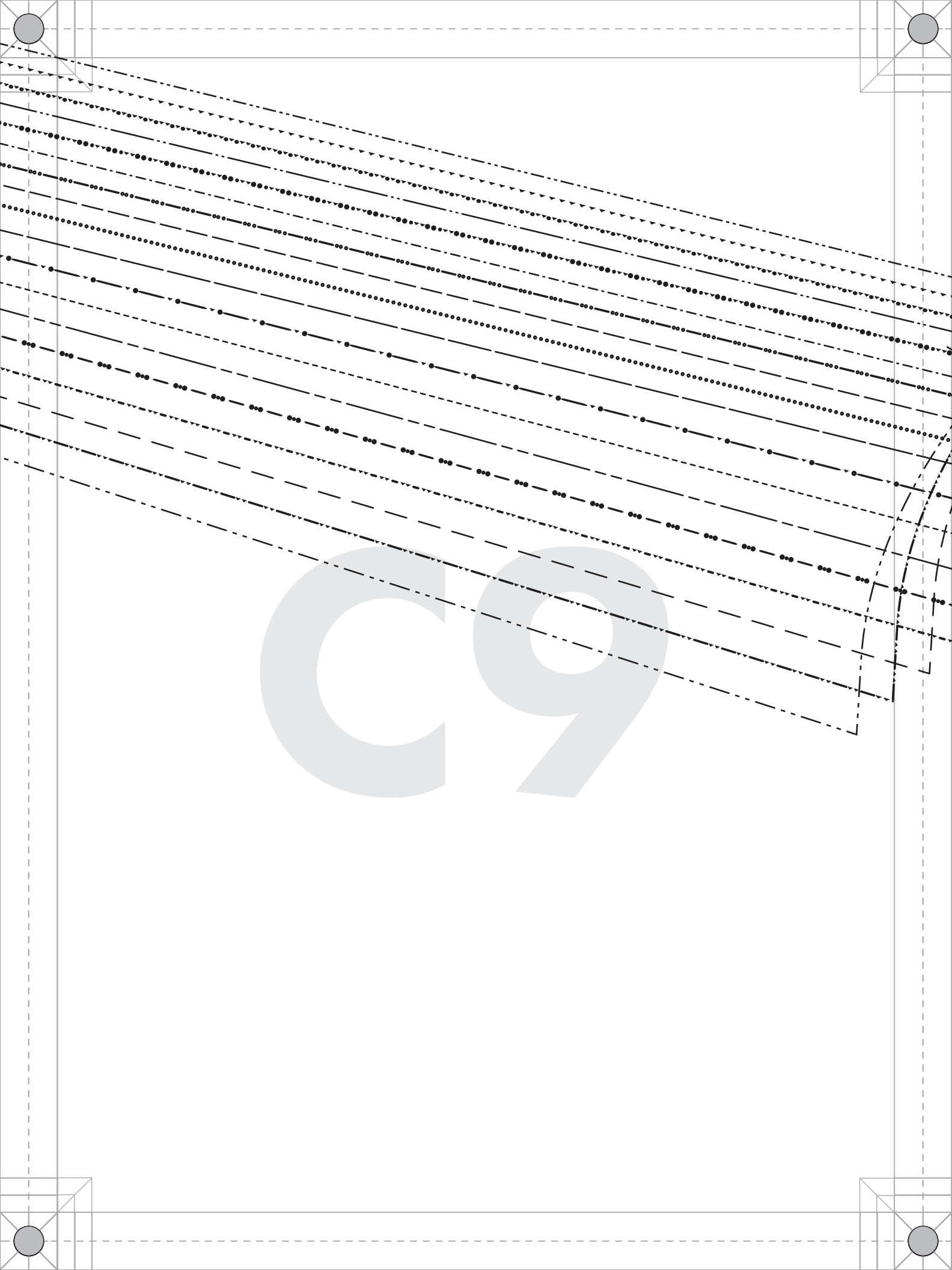
Ladies Sizes 00 to 32
1/2" seam allowances
(SA's) included

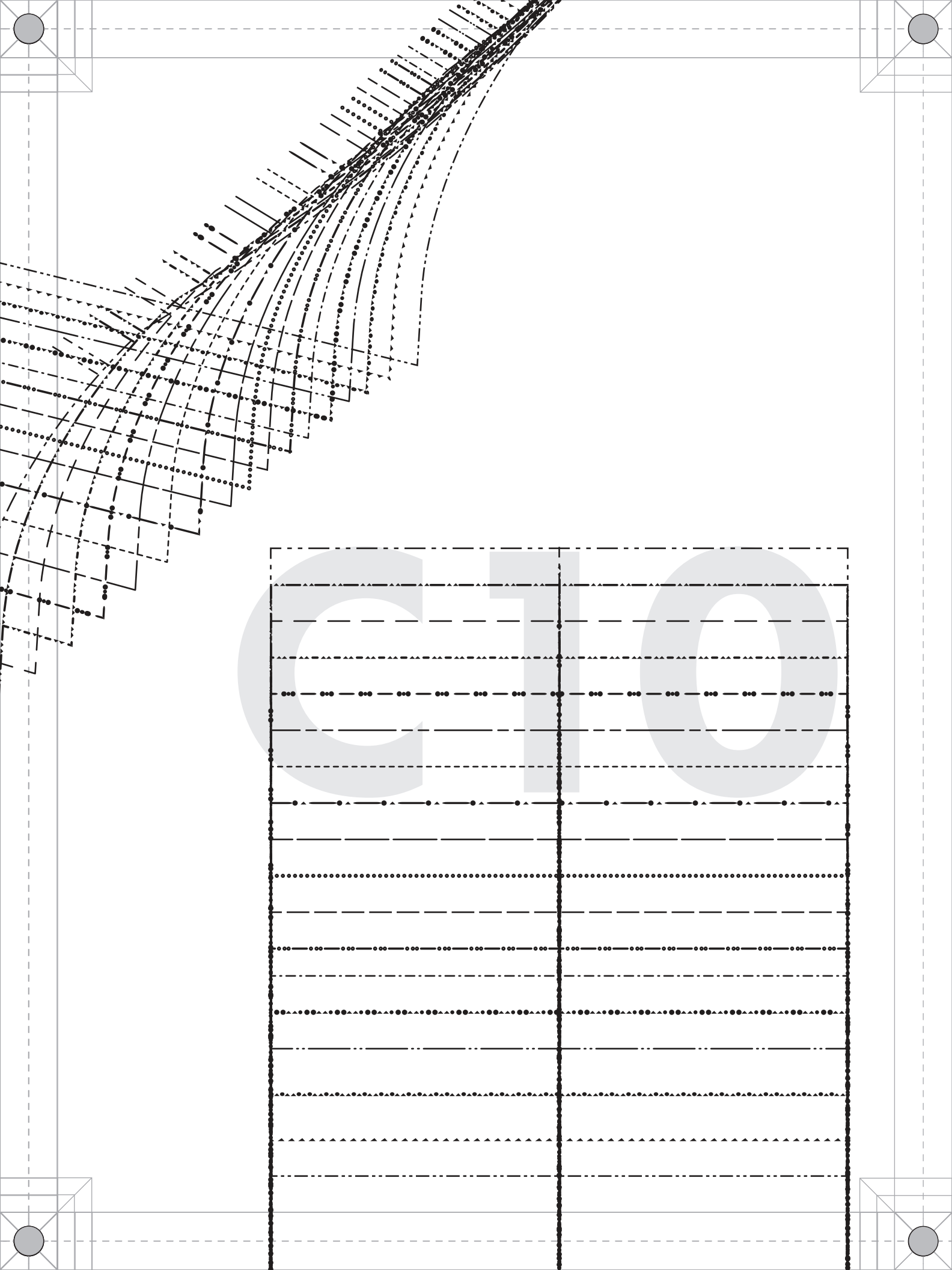




C8







PATTERNS

BY

mood

DESIGNER FABRICS

MDF383

#MoodCherPattern

“The Cher Jacket”

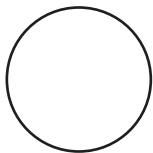
MDF383

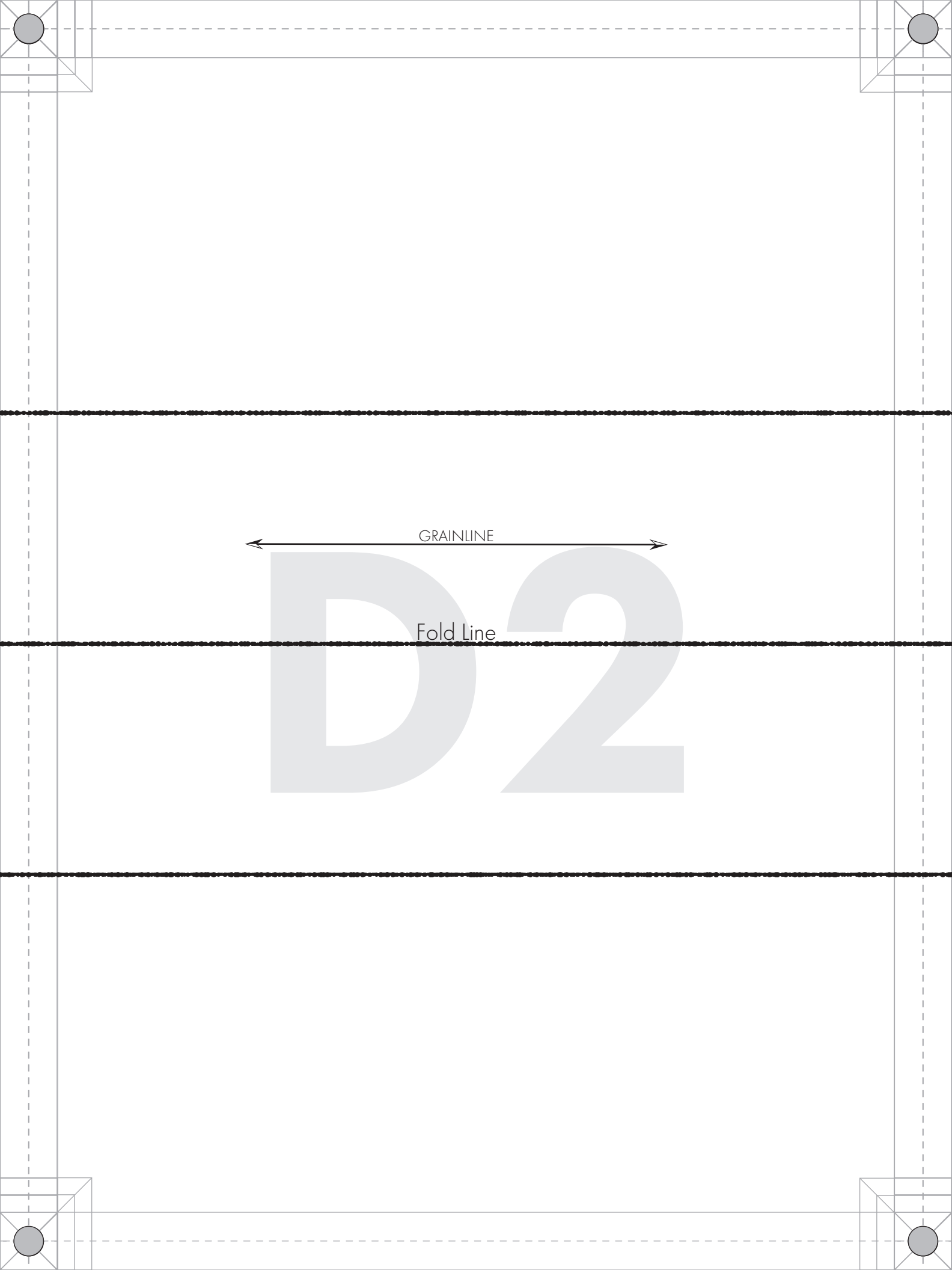
M - WAISTBAND

Cut 1

Ladies Sizes 00 to 32

1/2" seam allowances (SA's) included





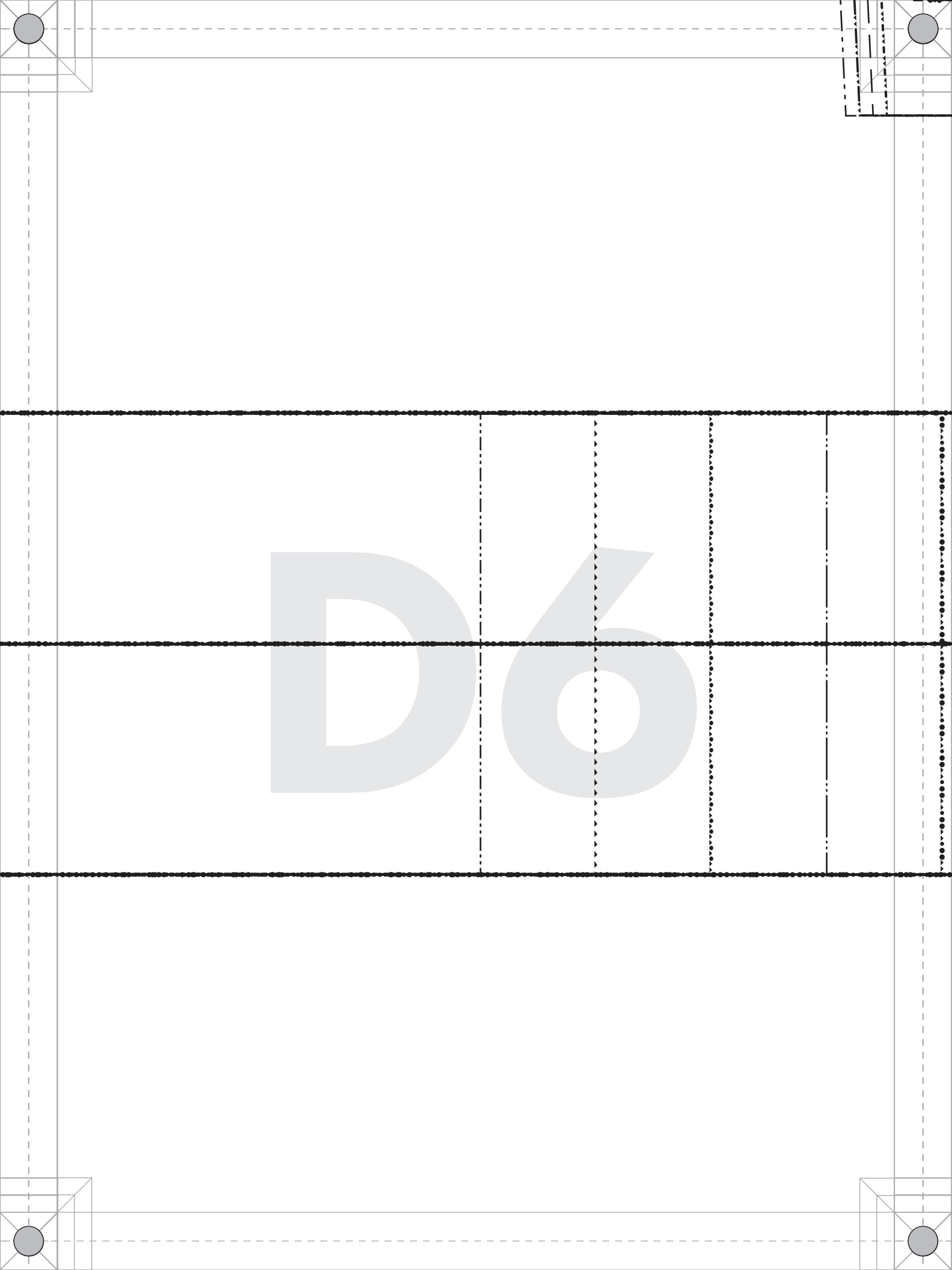
GRAINLINE

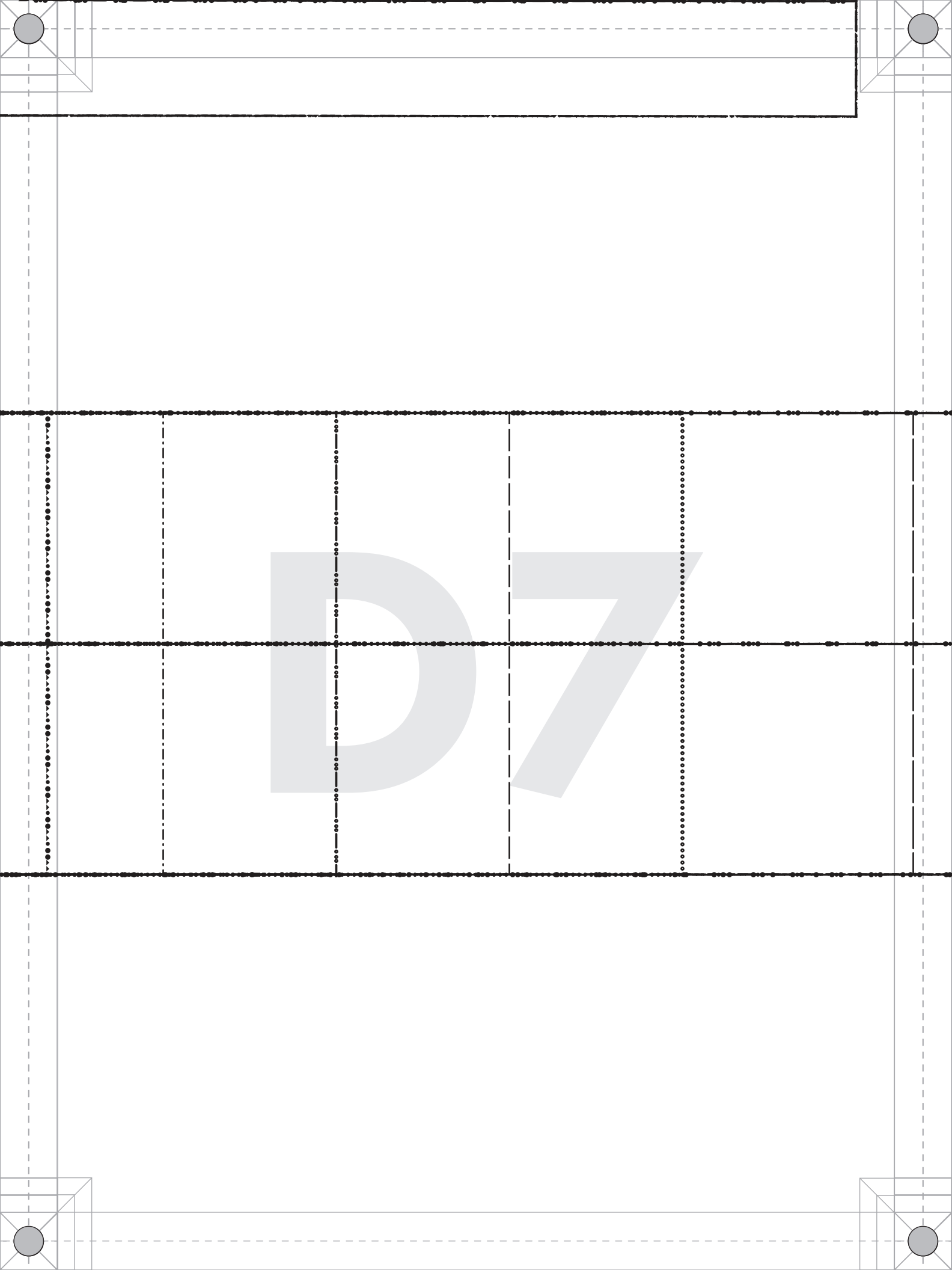
Fold Line

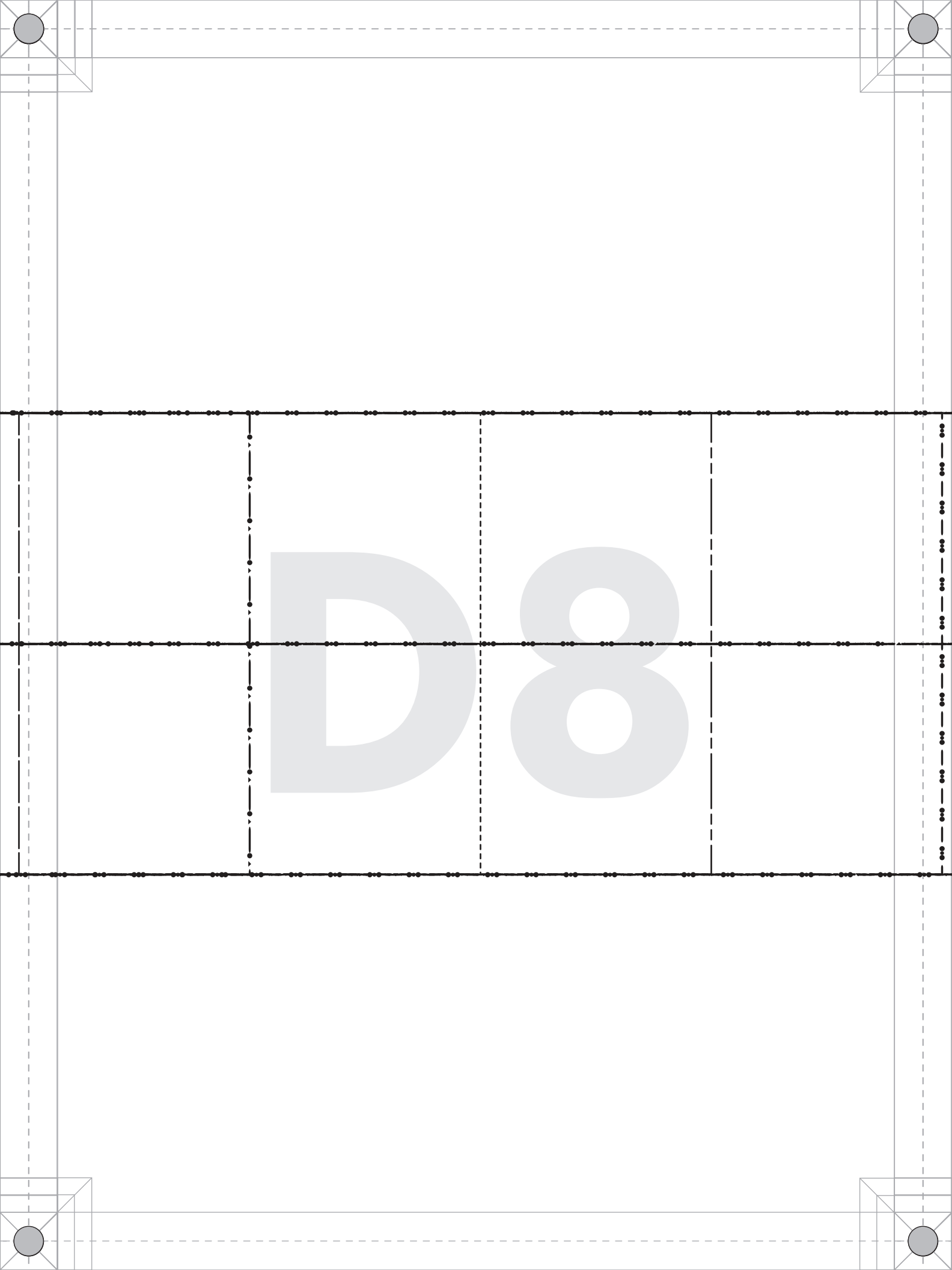
D3

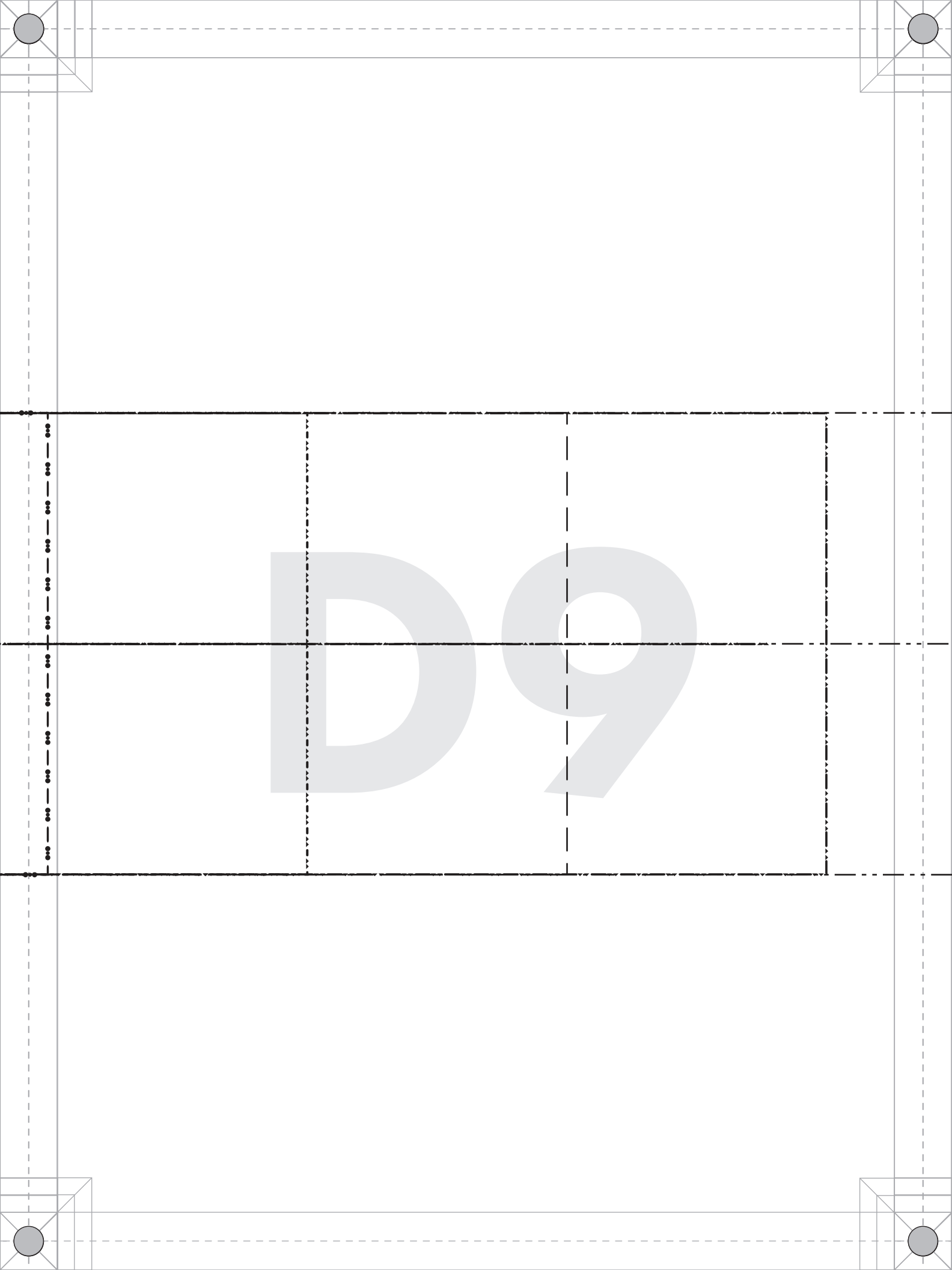
D4

D5











#MoodCherPattern

“The Cher Jacket”
MDF383
P - CUFFS
Cut 2

Ladies Sizes 00 to 32
1/2" seam allowances (SA's) included

GRAINLINE

Fold Line